

(19) World Intellectual Property Organization
International Bureau



(43) International Publication Date
7 November 2002 (07.11.2002)

PCT

(10) International Publication Number
WO 02/088301 A2

-
- (51) International Patent Classification⁷: C12N
- (21) International Application Number: PCT/IL02/00335
- (22) International Filing Date: 30 April 2002 (30.04.2002)
- (25) Filing Language: English
- (26) Publication Language: English
- (30) Priority Data:
60/287,741 2 May 2001 (02.05.2001) US
- (71) Applicant (*for all designated States except US*): **GAVISH GALILEE BIO APPLICATIONS LTD.** [IL/IL]; Kibbutz Glil Yam, 46905 Herzlia (IL).
- (72) Inventor; and
- (75) Inventor/Applicant (*for US only*): **AMIR, Rachel** [IL/IL]; Kibbutz Dan, 12445 M. P. Upper Galilee (IL).
- (74) Agent: **G. E. EHRlich (1995) LTD.**; 28 Bezalel Street, 52521 Ramat Gan (IL).
- (81) Designated States (*national*): AE, AG, AL, AM, AT (utility model), AT, AU, AZ, BA, BB, BG, BR, BY, BZ, CA, CH, CN, CO, CR, CU, CZ (utility model), CZ, DE (utility model), DE, DK (utility model), DK, DM, DZ, EC, EE (utility model), EE, ES, FI (utility model), FI, GB, GD, GE, GH, GM, HR, HU, ID, IL, IN, IS, JP, KE, KG, KP, KR, KZ, LC, LK, LR, LS, LT, LU, LV, MA, MD, MG, MK, MN, MW, MX, MZ, NO, NZ, OM, PH, PL, PT, RO, RU, SD, SE, SG, SI, SK (utility model), SK, SL, TJ, TM, TN, TR, TT, TZ, UA, UG, US, UZ, VN, YU, ZA, ZM, ZW.
- (84) Designated States (*regional*): ARIPO patent (GH, GM, KE, LS, MW, MZ, SD, SL, SZ, TZ, UG, ZM, ZW), Eurasian patent (AM, AZ, BY, KG, KZ, MD, RU, TJ, TM), European patent (AT, BE, CH, CY, DE, DK, ES, FI, FR, GB, GR, IE, IT, LU, MC, NL, PT, SE, TR), OAPI patent (BF, BJ, CF, CG, CI, CM, GA, GN, GQ, GW, ML, MR, NE, SN, TD, TG).
- Published:**
— *without international search report and to be republished upon receipt of that report*
- For two-letter codes and other abbreviations, refer to the "Guidance Notes on Codes and Abbreviations" appearing at the beginning of each regular issue of the PCT Gazette.*



WO 02/088301 A2

(54) Title: PLANTS CHARACTERIZED BY AN INCREASED CONTENT OF METHIONINE AND RELATED METABOLITES, METHODS OF GENERATING SAME AND USES THEREOF

(57) Abstract: A method of increasing methionine and/or methionine related metabolites in a plant is provided. The method is effected by expressing within the plant a cystathionine γ -synthase encoded by a polynucleotide mutated in, or lacking, a region encoding an N-terminal portion of said cystathionine γ -synthase, said region being functional in downregulating an activity of said cystathionine γ -synthase in the plant.

PLANTS CHARACTERIZED BY AN INCREASED CONTENT OF
METHIONINE AND RELATED METABOLITES, METHODS OF
GENERATING SAME AND USES THEREOF

5 FIELD AND BACKGROUND OF THE INVENTION

The present invention relates to a plants characterized by an increased content of methionine and methionine related metabolites, to methods of generating same and to uses thereof.

10 The diets of humans and livestock largely consists of plant material which contains low amounts of several essential amino acids not naturally synthesized by animals or humans. As a result, the nutritional value of plant material and as such plant derived foodstuff is typically limited, oftentimes requiring supplementation of plant derived foodstuff with synthetic amino acids in order to increase it's nutritional value.

15 Efforts to improve the balance of essential amino acids in the seed proteins of important crops utilizing classical breeding and mutant selection have met with limited success on the laboratory scale and failure on a commercial scale as agronomically acceptable cultivars have not yet been produced.

20 One of the most important essential amino acid, methionine, exists in limited quantities in legumes, cereals and other crops (Andersen JW., "The Biochemistry of Plants", Academic Press, NY, 1990, pp. 327-381).

The level of free methionine in plants is very low both in vegetative tissues and seeds. Methionine levels are regulated by both rate of synthesis and metabolism into derivative compounds. Methionine has a short half-life due to rapid conversion to SAM and incorporation into newly synthesized proteins. The incorporation of sulfate, methyl and carbon into methionine and its metabolites has been analyzed in Lemna via tracer elements. It has been observed that methionine is converted into SAM at a rate which is four-folds
25 faster than the incorporation of methionine into proteins (Giovanelli et al.,
30 Plant Physiol. 1985, 78:555).

Methionine biosynthesis is subject to regulatory control via cystathionine γ -synthase (CGS), the first enzyme in the Methionine biosynthesis pathway (Figures 1a-b). Studies conducted in Lemna have shown that the level of CGS activity decreases in plants grown in the presence of exogenous methionine (Thompson et al., Plant Physiol. 1982, 69:1077). Conversely, treatments that induce methionine deprivation resulted in an increase in the steady-state levels of CGS (Thompson et al., Plant Physiol. 1982, 70:1347).

Thus, it was theorized that methionine may regulate its own synthesis through negative feedback control of cystathionine synthesis. Analysis of *Arabidopsis mto1* mutants that over accumulate soluble methionine (Met) revealed that the gene encoding cystathionine gamma-synthase (CGS), the key enzyme in Met biosynthesis, is regulated at the level of mRNA stability and that an amino acid sequence encoded by the first exon of CGS acts in cis to destabilize its own mRNA in a process that is activated by Met or one of its metabolites. The *mto1* mutations were shown to be clustered within a small region in the exon, termed *mto1*, located downstream of the initiator codon (Chiba et al. Science 1999, 286:1371).

Methionine synthesis is also regulated in the biosynthetic pathway of the aspartate family amino acids at the point of competition between threonine synthase (TS) and CGS for their common substrate O-phosphohomoserine (OPH) (Figures 1a-b). Evidence for TS-CGS competition and its role in methionine synthesis has been obtained. It has been observed that the *mto2-1* mutant of *Arabidopsis* over-accumulates up to 20-fold more soluble methionine than the wild type plant and displays a marked reduction in threonine levels. The *mto2-1* allele carries a point mutation in the TS gene that produces a catalytically impaired enzyme (Bartlem et al. Plant Physiol. 2000, 123:101). Thus, decreased TS activity causes methionine overproduction at the expense of threonine. Furthermore, reducing the level of CGS by antisense methods, which in turn reduce levels of methionine, leads to a seven-fold

increase in threonine levels relative to wild-type plants (Kim et al., Plant Science 2000, 151:9). Therefore the levels of both TS and CGS are important in the partitioning of OPH to Met and threonine.

Methionine deficiency in, for example, poultry diets leads to retarded growth, decreased feed conversion efficiency and increased fat content. As such, commercial poultry diets are typically supplemented with synthetic Met (see, for example, U.S. Pat. No. 5,773,052).

In addition, it has been shown that wool growth in sheep and milk production in dairy animals are both limited by the availability of the sulfur amino acids (SAAs) methionine and cysteine (Xu et al., Dairy Sci. 1998, 81:1062).

In attempts to increase the SAA content of seeds, genes encoding SAA-rich proteins from vegetative tissues have been isolated and expressed in seeds under the control of seed-specific regulatory sequences. Such an approach has not resulted in an adequate increase in total target amino acid content in the seed. It has been shown that this and other approaches which attempt to increase SAA content by expression of met-rich proteins are typically limited by the ability of plants to synthesize methionine.

In another approach, genetic engineering methods have been utilized in an attempt to modulate the activity of enzymes catalyzing key steps of relevant biosynthetic pathways (see, for example, European Pat. App. No. 485970).

For example, expression of a mutant form of a bacterial aspartate kinase (AK) which desensitizes negative feed-back inhibition of lysine and threonine production in plants, resulted in a significant overproduction of threonine in vegetative tissue. However, expression of this gene under the control of a seed-specific promoter was shown to raise the levels of methionine content in seeds only three-fold relative to that of wild type plants (Karchi, *et al.*, The Plant J. 1993, 3:721).

Thus, although several approaches have been utilized in efforts to increase the levels of methionine and other essential amino acids in plants,

such approaches have failed to produce plants exhibiting a significant increase in methionine levels.

There is thus a widely recognized need for, and it would be highly advantageous to have, a method of increasing the content of methionine and its related metabolites in plants, thereby increasing the nutritional and commercial value of such plants.

SUMMARY OF THE INVENTION

According to one aspect of the present invention there is provided a method of increasing methionine and/or methionine related metabolites in a plant, the method comprising expressing within the plant a cystathionine γ -synthase encoded by a polynucleotide mutated in, or lacking, a region encoding an N-terminal portion of the cystathionine γ -synthase, the region being functional in downregulating an activity of the cystathionine γ -synthase in the plant. According to yet another aspect of the present invention there is provided a method of increasing the commercial and/or nutritional value of a plant comprising expressing within at least a portion of the plant a cystathionine γ -synthase encoded by a polynucleotide mutated in, or lacking, a region encoding an N-terminal portion of the cystathionine γ -synthase, the region being functional in downregulating an activity of the cystathionine γ -synthase in the plant, thereby increasing the level of methionine and/or metabolites of the methionine, hence increasing the commercial and/or nutritional value of the plant.

According to still another aspect of the present invention there is provided a method of generating a crop plant having enhanced nutritional value, the method comprising: (a) obtaining a first plant expressing a cystathionine γ -synthase encoded by a polynucleotide mutated in, or lacking, a region encoding an N-terminal portion of the cystathionine γ -synthase, the region being functional in downregulating an activity of the cystathionine γ -synthase in the plant; (b) crossing the first plant with a second plant

expressing methionine-rich storage proteins; and (c) isolating progeny plants which express the cystathionine γ -synthase and the methionine-rich storage proteins to thereby obtain the crop plant having enhanced nutritional value.

According to an additional aspect of the present invention there is provided a method of generating a crop plant having enhanced nutritional value, the method comprising transforming the crop plant with: (a) a first polynucleotide encoding a cystathionine γ -synthase, the first polynucleotide being mutated in, or lacking, a region encoding an N-terminal portion of the cystathionine γ -synthase, the region being functional in downregulating an activity of the cystathionine γ -synthase in the plant; and (b) a second polynucleotide encoding, in an expressible form, at least one methionine-rich storage protein, to thereby obtain the crop plant having enhanced nutritional value.

According to still an additional aspect of the present invention there is provided a method of obtaining at least one methionine related metabolite or derivate, the method comprising (a) obtaining a plant expressing a cystathionine γ -synthase encoded by a polynucleotide mutated in, or lacking, a region encoding an N-terminal portion of the cystathionine γ -synthase, the region being functional in downregulating an activity of the cystathionine γ -synthase in the plant; and (b) extracting at least one methionine related metabolite from the plant.

According to further features in preferred embodiments of the invention described below, the plant expressing the cystathionine γ -synthase also over-expresses feed back insensitive aspartae kinase (AK).

According to still further features in the described preferred embodiments the plant expressing the cystathionine γ -synthase and overexpressing feed back insensitive aspartae kinase (AK) is obtained by crossing a first plant over expressing feed back insensitive aspartae kinase (AK) and a second plant expressing the cystathionine γ -synthase and selecting for progeny expressing the cystathionine γ -synthase and overexpressing feed

back insensitive aspartate kinase (AK).

According to still further features in the described preferred embodiments, the methionine related metabolite or derivative is biotin.

5 According to still further features in the described preferred embodiments the polynucleotide is as set forth in SEQ ID NOs:3 or 4.

According to still further features in the described preferred embodiments one or more of the metabolites, such as, dimethylsulfide, contributes to the scent of a flower of a flowering plant.

10 According to still further features in the described preferred embodiments the plant is a consumable crop plant whereas increasing the level of methionine increases the level of methionine-rich storage proteins stored by the crop and thus the nutritional value of the crop.

According to yet an additional aspect of the present invention there is provided a nucleic acid construct comprising a polynucleotide encoding a cystathionine γ -synthase, the polynucleotide being mutated in, or lacking, a region encoding an N-terminal portion of the cystathionine γ -synthase, the region being functional in downregulating an activity of the cystathionine γ -synthase in the plant.

20 According to still further features in the described preferred embodiments the polynucleotide is as set forth in SEQ ID NO: 3 or 4

According to still further features in the described preferred embodiments the nucleic acid construct further comprising a promoter sequence being for directing the expression of a polypeptide from the polynucleotide sequence in a plant.

25 According to still further features in the described preferred embodiments the promoter is selected from the group consisting of an inducible promoter, a constitutive promoter, a tissue specific promoter and a development regulatable promoter.

According to still further features in the described preferred embodiments the nucleic acid construct further comprising an additional polynucleotide sequence encoding a storage protein.

5 According to still further features in the described preferred embodiments there is provided a plant transformed with the nucleic acid construct described above.

According to still further features in the described preferred embodiments the nucleic acid construct further comprising an additional polynucleotide encoding a transit peptide, the additional polynucleotide being
10 covalently linked to the polynucleotide encoding the cystathionine γ -synthase.

According to still an additional aspect of the present invention there is provided method of controlling ethylene levels of a plant, the method comprising (a) transforming the plant with a nucleic acid construct including a first polynucleotide region encoding a regulatable promoter being for directing
15 the expression of a second polynucleotide region encoding a cystathionine γ -synthase mutated in, or lacking, an N-terminal portion being functional in downregulating an activity of the cystathionine γ -synthase in the plant; and (b) subjecting the plant to conditions which regulate expression of the cystathionine γ -synthase, thereby controlling ethylene levels of the plant

20 According to still further features in the described preferred embodiments step (a) is effected at a developmental stage of the plant suitable for altering fruit ripening.

According to still further features in the described preferred embodiments the second polynucleotide is as set forth in SEQ ID NO: 4.

25 The present invention successfully addresses the shortcomings of the presently known configurations by providing a method of generating plants rich in methionine and/or its metabolites.

BRIEF DESCRIPTION OF THE DRAWINGS

The invention is herein described, by way of example only, with reference to the accompanying drawings. With specific reference now to the drawings in detail, it is stressed that the particulars shown are by way of example and for purposes of illustrative discussion of the preferred 5 embodiments of the present invention only, and are presented in the cause of providing what is believed to be the most useful and readily understood description of the principles and conceptual aspects of the invention. In this regard, no attempt is made to show structural details of the invention in more 10 detail than is necessary for a fundamental understanding of the invention, the description taken with the drawings making apparent to those skilled in the art how the several forms of the invention may be embodied in practice.

In the drawings:

FIG. 1a is a diagram depicting biosynthetic pathways of the aspartate 15 family amino acids. Major regulatory enzymes and their products are indicated. Feedback inhibition (-) and activation (+) loops are shown by dashed arrows. Abbreviations: AK = aspartate kinase; DHPS = dihydrodipicolinate synthase; HSD = homoserine dehydrogenase; HK = homoserine kinase; TS = threonine synthase; CGS = cystathione γ -synthase; CL = cystathionine γ -lyase; MS = 20 methionine synthase; TDH = threonine dehydratase; SAM = *S*-adenosyl methionine; SAMS = SAM synthase.

FIG. 1b is a diagram depicting methionine metabolism and recycling. Abbreviations: SMM = *S*-methylmethionine; AdoHCys = *S*-adenosylhomocysteine; SAM = *S*-adenosylmethionine; DMSP = 25 3-dimethylsulfoniopropionate; ACC = 1-aminocyclopropane-1-carboxylic acid.

FIG. 2 is a schematic representation depicting the *Arabidopsis* CGS cDNA. TP encodes pea *rbcS-3A* chloroplast transit peptide, which directs the protein into the chloroplast and is subsequently cleaved. Nucleotides are

numbered starting at the ATG initiator codon. The primers (A1-A3) used for the PCR reactions are indicated by arrows.

FIG. 3a is a schematic diagram depicting the DNA construct used to express full-length *Arabidopsis* CGS. Abbreviations: PRO: 35S CaMV promoter including sequence encoding ζ mRNA leader; TP: pea *rbcS-3A* chloroplast transit peptide; 3 x HA: haemagglutinin epitope tag; TER: octapine synthase 3' terminator.

FIG. 3b is a schematic diagram depicting the DNA construct used to express the 90-bp domain-deleted isoform of *Arabidopsis* CGS (Δ 296-386). Abbreviations: PRO: 35S CaMV promoter including sequence encoding ζ mRNA leader; TP: pea *rbcS-3A* chloroplast transit peptide; 3 x HA: haemagglutinin epitope tag; TER: octapine synthase 3' terminator.

FIG. 3c is a schematic diagram depicting the DNA construct used to express N-terminal domain-deleted (Δ 1-519) *Arabidopsis* CGS. Abbreviations: PRO: 35S CaMV promoter including sequence encoding ζ mRNA leader; TP: pea *rbcS-3A* chloroplast transit peptide; 3 x HA: haemagglutinin epitope tag; TER: octapine synthase 3' terminator.

FIG. 4 is a diagram comparing the amino acid sequences of the CGS enzymes of different organisms. Boxes indicate amino acid residues that are identical (black) or similar (gray). Dashes indicate gaps introduced to optimize the alignment. The N-terminal domain sequences of the CGSs are depicted in pink lettering. Red lettering indicates the 90-bp deleted isoform found in the *Arabidopsis* cDNA (see also Figure 3b). Yellow lettering indicates the point mutations of the MTO1 mutant. The blue letter in the *Arabidopsis* sequence at position 69 indicates the start of the mature protein (Ravanel *et al.*, Biochem J. 1998, 331:639). The CGS sequences compared are from *Glycine max* (soybean), *Arabidopsis thaliana*, *Zea mays*, *Escherichia Coli* and *Helicobacter pylori* (GenBank accession nos. AAD34548, U43709, AAB61347, P24601, AE000511, respectively). The program ClustalW was used to generate the alignment.

FIG. 5a is a diagram depicting the nucleotide sequence of full-length *Arabidopsis* CGS cDNA (SEQ ID NO: 1)

FIG. 5b is a diagram depicting the nucleotide sequence of full-length *Arabidopsis* CGS cDNA lacking sequences encoding transit peptide (used in the construct depicted in Figure 3a) (SEQ ID NO: 2).

FIG. 5c is a diagram depicting the nucleotide sequence of the 90 bp domain-deleted *Arabidopsis* CGS cDNA (used in the construct depicted in Figure 3b) (SEQ ID NO: 3).

FIG. 5d is a diagram depicting the nucleotide sequence of N-terminal domain-deleted *Arabidopsis* CGS cDNA (used in the construct depicted in Figure 3c) (SEQ ID NO: 4).

FIG. 6 depicts Western blot analysis of protein from transgenic plants expressing *Arabidopsis* CGS probed with anti-3HA epitope tag antibodies or CGS antiserum. Protein of transgenic plants expressing: N-terminal domain-deleted CGS (truncated plants, lanes 1-3); the full-length CGS (lanes 4-6); or a 90 bp domain-deleted CGS (deleted, lanes 8-10). WT - wild-type plant. The migration of MW protein markers is indicated on the right.

FIGs. 7a-c illustrate levels of methionine (7a); SMM (7b) and methionine incorporated into proteins (7c) in wild-type and transgenic lines expressing full-length, truncated and deleted version of *Arabidopsis* CGS. The amounts of methionine and SMM were calculated from total free amino acids plus SMM as detected by HPLC and is indicated as mole % of this total. The methionine level incorporated into proteins was calculated from PBS-soluble proteins that were subjected to amino acid analysis following protein hydrolysis by HPLC. The levels of soluble methionine, SMM and bound methionine were determined from leaf extracts of plants grown for seven weeks. The data are presented as the mean \pm SE of eight individual plants per line, one measurement per plant. Statistically significant differences ($p < 0.05$) are identified by letters.

FIGs. 8a-b illustrate patterns of volatile organic compounds (VOC)

detected from wild-type plant and transgenic plants expressing full-length, truncated and deleted version of CGS. The amount of dimethylsulfide (8a) and carbon disulfide (8b) emitted from fresh leaves was calculated by determined the area of the corresponding peak in the GC-MS graph as compared to a known standard. The data are presented as the mean + SE (black bars) of eight individual plants, one measurement per plant.

FIG. 9 illustrates attraction of mosquitoes to plants expressing the CGS lacking its N-terminal region.

FIG. 10 illustrates ethylene production by three week old shoots of transgenic and wild-type plants. The average \pm SE of five different shoots is shown.

DESCRIPTION OF THE PREFERRED EMBODIMENTS

The present invention is of a method which can be used to generate plants rich in methionine and/or methionine related metabolites and of plants generated by this method. Specifically, the present invention can be used to generate crop plants characterized by a higher nutritional value and/or a capacity to accumulate and/or release various compounds derived from methionine.

The principles and operation of the present invention may be better understood with reference to the accompanying descriptions.

Before explaining at least one embodiment of the invention in detail, it is to be understood that the invention is not limited in its application to the details of construction and the arrangement of the components set forth in the following descriptions or illustrated in the Examples section. The invention is capable of other embodiments or of being practiced or carried out in various ways. Also, it is to be understood that the phraseology and terminology employed herein is for the purpose of description and should not be regarded as limiting.

The production and accumulation of methionine and its metabolites in plants is important to both plants and animals which obtain at least a part of their dietary needs from plants.

As used herein the term "plant" refers to whole plants, any plant
5 portion, plant derived material such as mashed, chopped or otherwise processed plant material and plant cells such as plant cells grown in culture.

While reducing the present invention to practice the present inventors have uncovered that transformation of plants with a polynucleotide encoding a truncated cystathionine γ -synthase enzyme results in accumulation of
10 methionine and its related metabolites in the plant.

As is further described in the Examples section which follows, the plants generated according to the teachings of the present invention exhibit higher levels of methionine, SMM, dimethylsulfide, carbon disulfide, ethylene and biotin than wild type plants or plants expressing full length cystathionine γ
15 -synthase.

Thus, according to one aspect of the present invention, there is provided method of increasing methionine and/or methionine related metabolites in a plant.

The method is effected by expressing within the plant a cystathionine γ
20 -synthase encoded by a polynucleotide mutated in, or lacking, a region encoding an N-terminal portion of the cystathionine γ -synthase, the region being functional in downregulating an activity of the cystathionine γ -synthase in the plant.

Such "downregulating of activity" can result from inhibition of
25 cystathionine γ -synthase activity (e.g., feedback inhibition), inhibition of expression (transcription and/or translation), reduced stability of the mRNA encoding cystathionine γ -synthase, or post transcriptional and/or post translational modifications which result in downregulation of activity. Other mechanisms are also envisaged

30 As is further described in the examples section which follows, such an

N-terminal portion encompasses a 90 base pair region which resides downstream of a transit peptide sequence native to plant cystathionine γ -synthase (nucleotide coordinates 296-386 of SEQ ID NO:1).

Thus, any polynucleotide sequence generated by either deleting a portion of this region, the entire region or more, as exemplified by SEQ ID NO: 3 or 4, or by mutating this region in a manner which affects the sequence of the resulting transcript and optionally the sequence of the polypeptide translated therefrom can be utilized by the present invention, as long as cystathionine γ -synthase activity is retained and downregulation of this activity is at least partially abolished when expressed within the plant.

The polynucleotide sequence utilized by the present invention can also include a transit peptide encoding sequence for directing the formed cystathionine γ -synthase to an intracellular compartment (see the Examples section below for further detail).

Preferably, the polynucleotide sequence of the present invention forms a part of a nucleic acid construct which also includes a promoter sequence for directing the expression of cystathionine γ -synthase in a constitutive, tissue specific, inducible or developmentally regulatable manner.

Numerous examples of such promoter sequences are known in the art. Examples of constitutive plant promoters include, without limitation, CaMV35S and CaMV19S promoters, FMV34S promoter, sugarcane bacilliform badnavirus promoter, CsVMV promoter, *Arabidopsis* ACT2/ACT8 actin promoter, *Arabidopsis* ubiquitin UBQ1 promoter, barley leaf thionin BTH6 promoter, and rice actin promoter.

Particularly useful promoters for use in the present invention are tissue-specific promoters such as fruit, flower, tuber or seed specific promoters. There are numerous examples of tissue specific promoters known in the art. Tissue specific promoters may be used according to the present invention to direct methionine overproduction in tissues consumed as food or feed, such as seeds in cereals and tubers in potatoes. Examples of seed-specific

promoters include, but are not limited to, the bean phaseolin storage protein promoter shown to be expressed in a seed-specific manner in transgenic tobacco plants [Sengupta-Gopalan, 1985, Proc. Natl. Acad. Sci. USA 82: 3320-3324]; DLEC and PHS β promoters from Phaseolus [Bobb *et al.*, 1997, Nucleic Acids Res. 25: 641-7]; zein storage protein promoter [Vicente-Carbajosa *et al.*, 1997, Proc. Natl. Acad. Sci. USA, 94: 7685-90]; 5 conglutin gamma promoter from soybean [Ilgoutz *et al.*, 1997, Plant Mol Biol 34: 613-27]; AT2S1 gene promoter [Roeckel *et al.*, 1997, Transgenic Res 6: 133-41]; ACT11 actin promoter from *Arabidopsis* [Huang *et al.*, 1997, Plant Mol Biol. 33: 125-39]; napA promoter from *Brassica napus* [Ellerstrom *et al.*, 1996, Plant Mol Biol 32: 1019-27]. Examples of other fruit or seed specific promoters include the E8, E4, E17 and J49 promoters from tomato [Lincoln and Fischer 1988, Mol Gen Genet 212, 71-75], as well as the 2A11 promoter described in U.S. Pat. No. 4,943,674.

15 The inducible promoter is a promoter induced by a specific stimuli such as stress conditions including, for example, light, temperature, chemicals, drought, high salinity, osmotic shock, oxidant conditions or by pathogenic attack. Examples of inducible promoters include, without being limited to, the light-inducible promoter derived from the pea *rbcS* gene, the promoter from 20 the alfalfa *rbcS* gene, the promoters DRE, MYC and MYB active in drought; the promoters INT, INPS, *prxEa*, Ha *hsp17.7G4* and RD21 active in high salinity and osmotic stress, and the promoters *hsr203J* and *str246C* active in pathogenic stress.

The nucleic acid construct of the present invention preferably further 25 includes additional polynucleotide regions which provide a broad host range prokaryote replication origin; a prokaryote selectable marker; and, for *Agrobacterium* transformations, T DNA sequences for *Agrobacterium*-mediated transfer to plant chromosomes. Where the heterologous sequence is not readily amenable to detection, the construct will 30 preferably also have a selectable marker gene suitable for determining if a

plant cell has been transformed. A general review of suitable markers is found in Wilmink and Dons, *Plant Mol. Biol. Repr.* (1993) 11:165-185.

Suitable prokaryote selectable markers include resistance toward antibiotics such as ampicillin, kanamycin or tetracycline. Other DNA
5 sequences encoding additional functions may also be present in the nucleic acid construct, as is known in the art.

Sequences suitable for permitting integration of the polynucleotide sequence of the present invention into the plant genome are also recommended. These might include transposon sequences as well as Ti
10 sequences which permit random insertion of a heterologous expression cassette into a plant genome.

Several approaches can be utilized to introduce such polynucleotide sequences into a monocotyledonous or dicotyledonous plant.

The nucleic acid construct of the present invention can be utilized to
15 stably or transiently transform plant cells. In stable transformation, the polynucleotide of the present invention is integrated into the plant genome and as such it represents a stable and inherited trait. In transient transformation, the polynucleotide is expressed by the cell transformed but it is not integrated into the genome and as such it represents a transient trait.

20 There are various methods of introducing foreign genes into both monocotyledonous and dicotyledonous plants (Potrykus, I., *Annu. Rev. Plant. Physiol., Plant. Mol. Biol.* (1991) 42:205-225; Shimamoto *et al.*, *Nature* (1989) 338:274-276).

The principle methods of causing stable integration of exogenous DNA
25 into plant genomic DNA include two main approaches:

(i) *Agrobacterium*-mediated gene transfer: Klee *et al.* (1987) *Annu. Rev. Plant Physiol.* 38:467-486; Klee and Rogers in *Cell Culture and Somatic Cell Genetics of Plants*, Vol. 6, *Molecular Biology of Plant Nuclear Genes*, eds. Schell, J., and Vasil, L. K., Academic Publishers, San Diego,
30 Calif. (1989) p. 2-25; Gatenby, in *Plant Biotechnology*, eds. Kung, S. and

Arntzen, C. J., Butterworth Publishers, Boston, Mass. (1989) p. 93-112.

(ii) direct DNA uptake: Paszkowski *et al.*, in Cell Culture and Somatic Cell Genetics of Plants, Vol. 6, Molecular Biology of Plant Nuclear Genes eds. Schell, J., and Vasil, L. K., Academic Publishers, San Diego, Calif. (1989) p. 52-68; including methods for direct uptake of DNA into protoplasts, Toriyama, K. *et al.* (1988) *Bio/Technology* 6:1072-1074. DNA uptake induced by brief electric shock of plant cells: Zhang *et al.* *Plant Cell Rep.* (1988) 7:379-384. Fromm *et al.* *Nature* (1986) 319:791-793. DNA injection into plant cells or tissues by particle bombardment, Klein *et al.* *Bio/Technology* (1988) 6:559-563; McCabe *et al.* *Bio/Technology* (1988) 6:923-926; Sanford, *Physiol. Plant.* (1990) 79:206-209; by the use of micropipette systems: Neuhaus *et al.*, *Theor. Appl. Genet.* (1987) 75:30-36; Neuhaus and Spangenberg, *Physiol. Plant.* (1990) 79:213-217; glass fiber or silicon carbide whisker mediated transformation of cell cultures, embryos or callus tissue, U.S. Pat. No. 5,464,765 or by the direct incubation of DNA with germinating pollen, DeWet *et al.* in *Experimental Manipulation of Ovule Tissue*, eds. Chapman, G. P. and Mantell, S. H. and Daniels, W. Longman, London, (1985) p. 197-209; and Ohta, *Proc. Natl. Acad. Sci. USA* (1986) 83:715-719.

The *Agrobacterium* system includes the use of plasmid vectors that contain defined DNA segments that integrate into the plant genomic DNA. Methods of inoculation of the plant tissue vary depending upon the plant species and the *Agrobacterium* delivery system. A widely used approach is the leaf disc procedure which can be performed with any tissue explant that provides a good source for initiation of whole plant differentiation. Horsch *et al.* in *Plant Molecular Biology Manual A5*, Kluwer Academic Publishers, Dordrecht (1988) p. 1-9. A supplementary approach employs the *Agrobacterium* delivery system in combination with vacuum infiltration. The *Agrobacterium* system is especially viable in the creation of transgenic dicotyledenous plants.

There are various methods of direct DNA transfer into plant cells. In electroporation, the protoplasts are briefly exposed to a strong electric field. In microinjection, the DNA is mechanically injected directly into the cells using very small micropipettes. In microparticle bombardment, the DNA is adsorbed on microprojectiles such as magnesium sulfate crystals or tungsten particles, and the microprojectiles are physically accelerated into cells or plant tissues. In glass fibers or silicon carbide whisker mediated transformation, glass fibers or silicon carbide needles like structures are mixed with DNA and cells in a suspension to thereby induce fiber/whisker-cell collisions, which lead to cell impalement (by the fibers/whiskers) and polynucleotide injection into the cell.

The transformation methods described hereinabove are typically followed by propagation of transformed tissues. The most common method of plant propagation is by seed. Regeneration by seed propagation, however, has the deficiency that due to heterozygosity there is a lack of uniformity in the crop, since seeds are produced by plants according to the genetic variances governed by Mendelian rules. Basically, each seed is genetically different and each will grow with its own specific traits. Therefore, it is preferred that the transformed plant be produced such that the regenerated plant has the identical traits and characteristics of the parent transgenic plant. Therefore, it is preferred that the transformed plant be regenerated by micropropagation which provides a rapid, consistent reproduction of the transformed plants.

Micropropagation is a process of growing new generation plants from a single piece of tissue that has been excised from a selected parent plant or cultivar. This process permits the mass reproduction of plants having the preferred tissue expressing the fusion protein. The new generation plants which are produced are genetically identical to, and have all of the characteristics of, the original plant. Micropropagation allows mass production of quality plant material in a short period of time and offers a rapid multiplication of selected cultivars in the preservation of the characteristics of the original transgenic or transformed plant. The advantages of cloning plants

are the speed of plant multiplication and the quality and uniformity of plants produced.

Micropropagation is a multi-stage procedure that requires alteration of culture medium or growth conditions between stages. Thus, the micropropagation process involves four basic stages: Stage one, initial tissue culturing; stage two, tissue culture multiplication; stage three, differentiation and plant formation; and stage four, greenhouse culturing and hardening. During stage one, initial tissue culturing, the tissue culture is established and certified contaminant-free. During stage two, the initial tissue culture is multiplied until a sufficient number of tissue samples are produced to meet production goals. During stage three, the tissue samples grown in stage two are divided and grown into individual plantlets. At stage four, the transformed plantlets are transferred to a greenhouse for hardening where the plants' tolerance to light is gradually increased so that it can be grown in the natural environment.

Although stable transformation is presently preferred, transient transformation of, for example, flower tissue, leaf tissue, seeds, tubers or the whole plant is also envisaged by the present invention.

Transient transformation can be effected by any of the direct DNA transfer methods described above or by viral infection using modified plant viruses.

Viruses that have been shown to be useful for the transformation of plant hosts include CaMV, TMV and BV. Transformation of plants using plant viruses is described in U.S. Pat. No. 4,855,237 (BGV), EP-A 67,553 (TMV), Japanese Published Application No. 63-14693 (TMV), EPA 194,809 (BV), EPA 278,667 (BV); and Gluzman, Y. *et al.*, Communications in Molecular Biology: Viral Vectors, Cold Spring Harbor Laboratory, New York, pp. 172-189 (1988). Pseudovirus particles for use in expressing foreign DNA in many hosts, including plants, is described in WO 87/06261.

Construction of plant RNA viruses for the introduction and expression

of non-viral exogenous nucleic acid sequences in plants is demonstrated by the above references as well as by Dawson, W. O. *et al.*, *Virology* (1989) 172:285-292; Takamatsu *et al.* *EMBO J.* (1987) 6:307-311; French *et al.* *Science* (1986) 231:1294-1297; and Takamatsu *et al.* *FEBS Letters* (1990) 5 269:73-76.

When the virus is a DNA virus, suitable modifications can be made to the virus itself. Alternatively, the virus can first be cloned into a bacterial plasmid for ease of constructing the desired viral vector with the foreign DNA. The virus can then be excised from the plasmid. If the virus is a DNA virus, a 10 bacterial origin of replication can be attached to the viral DNA, which is then replicated by the bacteria. Transcription and translation of this DNA will produce the coat protein which will encapsidate the viral DNA. If the virus is an RNA virus, the virus is generally cloned as a cDNA and inserted into a plasmid. The plasmid is then used to make all of the constructions. The RNA 15 virus is then produced by transcribing the viral sequence of the plasmid and translation of the viral genes to produce the coat protein(s) which encapsidate the viral RNA.

Construction of plant RNA viruses for the introduction and expression in plants of non-viral exogenous nucleic acid sequences such as those included 20 in the construct of the present invention is demonstrated by the above references as well as in U.S. Pat. No. 5,316,931.

In one embodiment, a plant viral nucleic acid is provided in which the native coat protein coding sequence has been deleted from a viral nucleic acid, a non-native plant viral coat protein coding sequence and a non-native 25 promoter, preferably the subgenomic promoter of the non-native coat protein coding sequence, capable of expression in the plant host, packaging of the recombinant plant viral nucleic acid, and ensuring a systemic infection of the host by the recombinant plant viral nucleic acid, has been inserted.

Alternatively, the coat protein gene may be inactivated by insertion of 30 the non-native nucleic acid sequence within it, such that a protein is produced.

The recombinant plant viral nucleic acid may contain one or more additional non-native subgenomic promoters. Each non-native subgenomic promoter is capable of transcribing or expressing adjacent genes or nucleic acid sequences in the plant host and incapable of recombination with each other and with native subgenomic promoters. Non-native (foreign) nucleic acid sequences may be inserted adjacent the native plant viral subgenomic promoter or the native and a non-native plant viral subgenomic promoters if more than one nucleic acid sequence is included. The non-native nucleic acid sequences are transcribed or expressed in the host plant under control of the subgenomic promoter to produce the desired products.

In a second embodiment, a recombinant plant viral nucleic acid is provided as in the first embodiment except that the native coat protein coding sequence is placed adjacent one of the non-native coat protein subgenomic promoters instead of a non-native coat protein coding sequence.

In a third embodiment, a recombinant plant viral nucleic acid is provided in which the native coat protein gene is adjacent its subgenomic promoter and one or more non-native subgenomic promoters have been inserted into the viral nucleic acid. The inserted non-native subgenomic promoters are capable of transcribing or expressing adjacent genes in a plant host and are incapable of recombination with each other and with native subgenomic promoters. Non-native nucleic acid sequences may be inserted adjacent the non-native subgenomic plant viral promoters such that said sequences are transcribed or expressed in the host plant under control of the subgenomic promoters to produce the desired product.

In a fourth embodiment, a recombinant plant viral nucleic acid is provided as in the third embodiment except that the native coat protein coding sequence is replaced by a non-native coat protein coding sequence.

The viral vectors are encapsidated by the coat proteins encoded by the recombinant plant viral nucleic acid to produce a recombinant plant virus. The recombinant plant viral nucleic acid or recombinant plant virus is used to

infect appropriate host plants. The recombinant plant viral nucleic acid is capable of replication in the host, systemic spread in the host, and transcription or expression of foreign gene(s) (isolated nucleic acid) in the host to produce the desired protein.

5 As is described in detail in the Examples section which follows, the plants generated according to the teachings of the present invention are characterized by several commercially important traits.

It has been shown that the protein storage capacity of numerous crop plants is limited by a level of methionine found in these plants. Thus, the ability of plants generated according to the teachings of the present invention to accumulate higher levels of methionine enables such plants to generate and accumulate higher levels of proteins thus greatly increasing the nutritional and commercial value of such plants.

10 To further increase the level of plant expressed proteins, such as, for example, storage proteins (see examples below), transformed plants expressing the truncated or mutated cystathionine γ -synthase can be crossed with plants expressing high levels of a storage protein and a progeny expressing both can be selected.

Alternatively, plants can be co-transformed with a first polynucleotide encoding the truncated or mutated cystathionine γ -synthase of the present invention and a second polynucleotide encoding a storage protein such as, but not limited to, a maize 15 kDa zein protein which contains 12% methionine by weight; a maize 10 kDa zein protein which contains 22% methionine by weight; a Brazil nut seed 2S albumin which contains 24% methionine by weight; a sun flower seed methionine-rich protein, and a rice 10 kDa seed prolamin which contains 25% methionine by weight.

25 Co-transfection of plants with the first and second polynucleotides can be effected using two nucleic acid constructs each including a specific polynucleotide or alternatively both polynucleotides can be introduced into the plant via a single nucleic acid construct.

30

Several approaches can be utilized to enable expression of both polynucleotides from a single construct.

The expression of each polynucleotide can be directed by a dedicated promoter or alternatively, the first and second polynucleotide sequences can be transcribed from a single promoter as a polycistronic message. In such a case, the polycistronic sequence also includes an internal ribosome entry site (IRES) to facilitate translation of the downstream polynucleotide sequence.

Still alternatively, the first and second polynucleotide sequences can be translationally fused around a protease cleavage site cleavable by a plant expressed protease, in which case, protease cleavage of the chimeric polypeptide formed would generate the cystathionine γ -synthase and storage protein.

It will be appreciated that expression of mutant or wild-type aspartate kinase (AK) in any of the plants described above can further increase methionine production and accumulation/assimilation and/or storage protein content in such plants.

Expression of aspartate kinase (AK) (preferably a feed back insensitive mutant form) can be achieved by either directly transforming the plants described above with a polynucleotide sequence encoding such an AK, or alternatively by crossing any of the plants described above with a second plant expressing (preferably high levels - over expression) the AK.

Expression of AK would shift the carbon skeleton towards the threonine branch of the aspartate family, and would thus lead to an increase of threonine and methionine synthesis.

In any case, the resulting plants would be able to generate and accumulate high levels of a storage protein or proteins thus greatly increasing the commercial and/or nutritional value of such plants.

It will be appreciated that since such plants can provide a rich source of protein to both animals and humans, they are suitable for cultivation in geographical regions in which both animals and humans suffer from

malnutrition, such as the case with third world countries.

The plants of the present invention are also characterized by high levels of methionine related metabolites/derivates such as SMM, dimethylsulfide, carbon disulfide, ethylene and biotin. Such metabolites may be extracted from the plants using methods known to the schooled artisan, such as, but not limited to, solvent extraction, filtration, chromatography, electrophoresis and the like.

As is further described in the Examples section which follows, some or all of these metabolites participate in plant pathogen resistance, allelopathy or scent production.

As such, the plants generated according to the teachings of the present invention, would exhibit increased pathogen resistance, allelopathic capabilities which are important in limiting growth conditions, an increased or altered scent which can lead to an increase in pollination by insects or other vectors and/or an increase in the commercial and/or nutritional value of the plant.

Since expression of the modified cystathionine γ -synthase of the present invention in plants has led to increased levels of ethylene, the nucleic acid constructs of the present invention can also be used to selectively increase ethylene levels in plants for the purposes of, for example, controlling fruit ripening or plant development.

Thus according to another aspect of the present invention there is provided a method of controlling ethylene levels of a plant. The method according to this aspect of the present invention is effected by transforming the plant with a nucleic acid construct including a first polynucleotide region encoding a regulatable promoter (e.g., inducible, tissue specific, developmentally regulated) which serves for directing the expression of a second polynucleotide region encoding a cystathionine γ -synthase mutated in, or lacking, an N-terminal portion being functional in downregulating an activity of the cystathionine γ -synthase in the plant (preferably that encoded by

SEQ ID NO:4). Following transformation and generation of seedlings, positive transformants are selected by standard detection methods (e.g., PCR) or by subjecting the seedlings to conditions suitable for inducing expression of the cystathionine γ -synthase and comparing ethylene levels of transgenic
5 seedlings to that of wild type seedlings.

Once a line of transformants is established, the expression of the cystathionine γ -synthase is regulated by either switching expression on and off using inductive conditions (described hereinabove), or the plant is allowed to grow to a desired stage in which expression of the exogenous cystathionine γ
10 -synthase is switched on and ethylene production is increased.

In any case, the above describe methodology can be used to control fruit ripening or plant development, capabilities which are of high commercial importance.

Additional objects, advantages, and novel features of the present invention will become apparent to one ordinarily skilled in the art upon examination of the following examples, which are not intended to be limiting. Additionally, each of the various embodiments and aspects of the present invention as delineated hereinabove and as claimed in the claims section below
15 finds experimental support in the following examples.

20

EXAMPLES

Reference is now made to the following examples, which together with the above descriptions, illustrate the invention in a non limiting fashion.

Generally, the nomenclature used herein and the laboratory procedures
25 utilized in the present invention include molecular, biochemical, microbiological and recombinant DNA techniques. Such techniques are thoroughly explained in the literature. See, for example, "Molecular Cloning: A laboratory Manual" Sambrook et al., (1989); "Current Protocols in Molecular Biology" Volumes I-III Ausubel, R. M., ed. (1994); Ausubel et al.,
30 "Current Protocols in Molecular Biology", John Wiley and Sons, Baltimore,

Maryland (1989); Perbal, "A Practical Guide to Molecular Cloning", John Wiley & Sons, New York (1988); Watson et al., "Recombinant DNA", Scientific American Books, New York; Birren et al. (eds) "Genome Analysis: A Laboratory Manual Series", Vols. 1-4, Cold Spring Harbor Laboratory Press, New York (1998); methodologies as set forth in U.S. Pat. Nos. 4,666,828; 4,683,202; 4,801,531; 5,192,659 and 5,272,057; "Cell Biology: A Laboratory Handbook", Volumes I-III Cellis, J. E., ed. (1994); "Current Protocols in Immunology" Volumes I-III Coligan J. E., ed. (1994); Stites et al. (eds), "Basic and Clinical Immunology" (8th Edition), Appleton & Lange, Norwalk, CT (1994); Mishell and Shiigi (eds), "Selected Methods in Cellular Immunology", W. H. Freeman and Co., New York (1980); available immunoassays are extensively described in the patent and scientific literature, see, for example, U.S. Pat. Nos. 3,791,932; 3,839,153; 3,850,752; 3,850,578; 3,853,987; 3,867,517; 3,879,262; 3,901,654; 3,935,074; 3,984,533; 3,996,345; 4,034,074; 4,098,876; 4,879,219; 5,011,771 and 5,281,521; "Oligonucleotide Synthesis" Gait, M. J., ed. (1984); "Nucleic Acid Hybridization" Hames, B. D., and Higgins S. J., eds. (1985); "Transcription and Translation" Hames, B. D., and Higgins S. J., eds. (1984); "Animal Cell Culture" Freshney, R. I., ed. (1986); "Immobilized Cells and Enzymes" IRL Press, (1986); "A Practical Guide to Molecular Cloning" Perbal, B., (1984) and "Methods in Enzymology" Vol. 1-317, Academic Press; "PCR Protocols: A Guide To Methods And Applications", Academic Press, San Diego, CA (1990); Marshak et al., "Strategies for Protein Purification and Characterization - A Laboratory Course Manual" CSHL Press (1996); all of which are incorporated by reference as if fully set forth herein. Other general references are provided throughout this document. The procedures therein are believed to be well known in the art and are provided for the convenience of the reader. All the information contained therein is incorporated herein by reference.

MATERIALS AND METHODS

Vector construction: Arabidopsis CGS sequences were cloned as follows. Briefly, total RNA from flowers and leaves was extracted with Tri-Reagent (Sigma), according to the protocol provided by the manufacturer. Complementary DNA was synthesized from 1 µg total RNA by AMV reverse transcriptase (Promega, Madison, WI) and CGS cDNAs were cloned by PCR using primers listed in Table 1. cDNAs encoding the full-length and the 90-bp deleted CGS (Figure 2) were amplified, using primers A1 (SEQ ID NO: 5) and A2 (SEQ ID NO: 6) and primers A3 (SEQ ID NO: 7) and A2 (SEQ ID NO: 6), respectively.

Table 1. PCR primers

Primer	Starting nucleotide coordinate (bp's 3' of CGS cDNA ATG initiator codon)	Nucleotide sequence
A1	204	5' AGCATGCTCGTCCGTCAGCTGAGCATTAAGC 3' (SEQ ID NO: 5)
A2	1692	5' ACCCGGGGATGGGCTTCGAGAGCTTGAAG 3' (SEQ ID NO: 6)
A3	519	5' AGCATGCTCAGCTCCGATGGGAGCCTCACTG 3' (SEQ ID NO: 7)

Primers A1 and A3 encode an SphI restriction site containing an ATG translation-initiation codon, while primer A2 contains a SmaI restriction site. PCR and reverse transcription (RT)-PCR analyses were performed in transfection experiments according to established protocols (Frohman, M.A., "PCR Protocols: A Guide to Methods and Applications", 1990, Academic Press, San Diego). Amplified CGS sequences were cloned into vector pGMT (Promega) and sequenced with an automatic DNA sequencer (Model 373A, Applied Biosystems, Foster City, CA).

Polymerase chain reactions were performed using Expend DNA polymerase (Boehringer) and consisted of 30 cycles of the following set of incubations: 1 min./95°C -> 1 min./54°C -> 1.5 min./72°C. PCR products were ligated into plasmid pGMT and both DNA strands of inserts were

sequenced to control for fidelity of amplification. Following digestion with SphI, the PCR-derived inserts were subcloned into SphI-linearized CE vector (Shaul *et al.*, Plant Physiol. 1992, 100:1157; Karchi *et al.*, The Plant J. 1993, 3:721). Vector CE expresses genes in vegetative tissues and targets synthesized protein to plastids. It contains the 35S promoter of cauliflower mosaic virus and the ζ -DNA sequence of the coat protein gene of tobacco mosaic virus which encodes a translation-enhancing mRNA leader (Gallie *et al.*, Plant Cell 1989, 1:301). Targeting of expressed protein to plastids is directed via pea *rbcS-3A* (rubisco) transit peptide (TP) encoded by a sequence inserted between the ζ -DNA and CGS coding sequences. The SmaI-digested fragment of vector CE containing the 35S promoter and the rubisco TP and CGS coding sequences was subcloned into SmaI-digested binary Ti plasmid, pZP111 (Hadjukiewicz *et al.*, Plant Mol. Biol. 1994, 25:989), thus generating insert-containing pZP111 constructs. Tang *et al.* [Tang *et al.* 2000, Plant J 23:195-203] designed the pZP111 plasmid with SmaI site at the end of its polylinker site, and an epitop tag of a triple haemagglutinin epitope-tag (3xHA), followed by a TGA stop codon and a 3' terminator derived from the octopine synthetase gene of *Agrobacterium tumefaciens*. The SmaI site enables in-frame fusions with the CGS sequences at the 3' end of the insert. Plasmid pZP111 also provides a gene for kanamycin resistance.

Plant transformation: Insert-containing pZP111 constructs were used to transform *Nicotiana tabacum* cv Samson NN by the leaf-disk protocol (Hosch *et al.*, Science 1985, 227:1229). Transgenic plants were selected on the basis of their ability to regenerate and root on media containing 100 mg/l kanamycin. They were further grown on Nitsch medium in magenta boxes at 25 °C, with a light intensity of 30-40 mE m⁻² sec⁻¹ and a 16/8 h day/night regime. Approximately month-old leaves were tested by PCR for the presence of the CGS gene. Thirty transgenic plants from each set of transformations were then transferred to the greenhouse, grown to maturity and selfed.

Western immunoblotting analysis of transgenic protein expression:

Leaves were homogenized by mortar and pestle in an equal volume of cold 100 mM Tris-HCl pH 7.5 containing 2 mM EDTA and 1 mM phenylmethylsulfonylfluoride (PMSF). Homogenates were centrifuged (5 min. at 16000 g at 4°C) and supernatants were harvested. Supernatant proteins were fractionated by SDS-PAGE, transfer-blotted to a PVDF membrane using a Bio-Rad Protein Trans-Blot apparatus and blots were blocked by overnight incubation at 4°C in a solution containing 5% non-fat milk. Blots were incubated with anti-3HA antibodies or CGS anti-serum for 2 h at room temperature and subsequently incubated with horseradish-peroxidase-conjugated anti-mouse IgG for 2 h at room temperature. Visualization of labeled proteins was performed via an enhanced chemiluminescence immunodetection kit (Pierce), in accordance with the manufacturer's instructions.

Measurement of free amino acid levels in leaves and seeds of transgenic plants: Leaves from approximately month-old, greenhouse-grown tobacco plants were harvested, ground in liquid nitrogen and stored frozen. Free amino acids were extracted from ground and frozen leaves as previously described (Bieleski *et al.*, Anal Biochem. 1966, 17:278). Concentrations of free amino acids were determined using O-phthalaldehyde reagent followed by measurement of 335/447 nm fluorescence. Amino acid composition was determined in samples containing 66 nmol of total free amino acids using a Hewlett-Packard Amino Quant Liquid Chromatograph.

Measurement of protein-bound amino acids levels: Leaves were homogenized and extracted at 4°C in 100 mM Tris-HCl, pH 7.5 containing 1 mM PMSF and 1 µM leupeptin. Following centrifugation (5 min, 16,000 g, 4°C) of homogenates, supernatants were collected and protein concentration was determined by the Bradford method. Protein (30 mg) was hydrolyzed in 0.3 ml distilled 6 N HCl at 110°C for 22 h, under vacuum. The composition of

protein-bound amino acids was identified by loading 4 μg of hydrolyzed protein on an HPLC column (Dionex, Bio LC Amino Acid Analyzer).

Gas chromatography and mass spectrometry: The volatile organic compounds (VOCs) from leaves of transgenic plants were determined, using the OI 4560 Purge and Trap system connected to a Hewlett Packard 5890 series II Gas Chromatograph equipped with a 5972 MS Detector. Data analysis was performed using HP MS Chemstation software according to EPA method No 524.2 using 60m fused silica capillary columns (ID of 0.25 μm and film thickness of 1.4 μm). Double-distilled water (10 ml) was added to 1 g of fresh leaves taken from young transgenic plants, samples were purged at room temperature with 99.999% helium (40 ml per min for 11 min) and VOCs were isolated in an ambient temperature micro-trap containing silica, Tenax and charcoal as adsorbents. Volatile analytes were then thermally desorbed at 180°C and injected into the gas chromatographic column through a transfer line heated to 100°C. Chromatographic separation was performed over a temperature gradient rising from 35°C to 220°C at a rate of 10°C per minute.

Ethylene production assay: Ethylene production was assayed as previously described (Guzman and Ecker, Plant Cell 1990, 2:513) from young (approximately 10 cm high) regenerated transgenic shoots. Shoots were planted in soil, allowed to grow for three weeks and, were incubated with their pots for 24 h at 22°C in airtight 1L magenta. Ethylene was assayed by GC (HP, model 5890) using an Alumina 60/80 column (Model Supleco 020283). An appropriately diluted standard of 640 $\mu\text{l L}^{-1}$ of ethylene (balance N_2) was used to calculate ethylene concentration.

Measurement of biotin: Leaf samples were frozen in liquid nitrogen and biotin levels were measured as previously described (Chang *et al.*, J. Biochem. Biophys. Methods 1994, 29:321) using alkaline phosphatase-conjugated avidin (Extravidin, Sigma) instead of streptavidin-HRP.

EXPERIMENTAL RESULTS

The catalytic domain of CGS is located in the C-terminal domain:

Alignment of bacterial and plant CGS sequences reveals that the N-terminal domain of the plant CGS, where the *mtol* mutations are located, does not exist
5 in bacterial CGS (Figure 4). In order to study the role of this domain in
Arabidopsis thaliana CGS (AtCGS) activity, AtCGS sequences, full-length or
containing a deletion of this domain, were cloned into prokaryotic vector pQE
(QIAGEN) which was used to transform the CGS-deficient *E. coli* mutant
LE392 (*metB*). As a positive control, the entire open reading frame of *E. coli*
10 CGS was also transformed in the mutant. All of these constructs allowed the
mutant to grow on minimal medium lacking Met, whereas vector-only control
transformants could not. Therefore, it can be concluded that N-terminal
domain-deleted CGS is able to functionally complement the *E. coli* mutant
and hence that the catalytic domain of CGS is located in the conserved
15 C-terminal domain of this enzyme. We further suggest that the N-terminal
domain of CGS serves an additional plant-specific regulatory role in the
function of CGSs.

***An alternate transcript of CGS containing a 90 bp in-frame deletion
within the N-terminal domain:*** CGS-encoding DNA was PCR-amplified from
20 an *Arabidopsis* flower cDNA library using primers A1 and A2 (Figure 2,
Table 1). Two amplification products were generated; one with a size
corresponding to full-length CGS and the second shorter by about 0.1 kb. The
sequence of the longer product was found to correspond to that expected for
full-length CGS (Genbank accession number U43709) while the smaller one
25 was found to contain a 90 bp deletion within the N-terminal domain, between
nucleotides 296 and 386 (Figure 2 and at protein level see Figure 4, red
letters). This 90 bp deletion was found to keep the protein sequence in frame,
suggesting that protein functionality, including catalytic activity, was retained
on the C-terminal side of the deletion. The sequences of the full-length CGS
30 and that of its deleted version are shown in Figure 5.

Primers A1 and A2 were also employed to amplify CGS cDNA from an *Arabidopsis* hypocotyl cDNA library and, via RT-PCR, from total RNA extracted from *Arabidopsis* leaves, flowers, roots and seedlings. In all cases, both the full-length and the 90 bp domain-deleted cDNA sequences were amplified. Sequence analysis of the *Arabidopsis* database failed to identify a separate CGS gene lacking this 90 bp domain, implying that both the full-length and the deletion-containing cDNAs are produced from the same gene. The 90 bp deletion is contained within exon 1 of the CGS transcript (Figure 2) and is not flanked by any known consensus intron/exon boundary sequences. Its vicinity to the MTO1 region 45 bases downstream (Figure 2), which is important for post-transcriptional regulation of CGS levels, suggests that this deleted region may be involved in regulating CGS expression.

Generation of tobacco plants transgenic for deletion mutants of CGS:

In order to analyze the role of the deleted 90 bp domain and of the N-terminal domain of CGS in plants, constructs encoding full-length, 90 bp domain-deleted ($\Delta 296-386$) and N-terminal domain-deleted ($\Delta 1-519$) *Arabidopsis* CGS cDNA were prepared (Figures 3a, 3b and 3c, respectively). Since the N-terminal domain-deleted construct does not possess a transit peptide, and to shorten the sequence, the original TP in these constructs has been removed and replaced by pea *rbcS-3A* TP fused in-frame to the CGS coding sequence. These constructs further comprise an epitope tag (3HA) at their 3' termini, enabling detection of expressed protein by Western blot, distinction of transgenic from endogenous protein and establishment of whether a single DNA or cDNA sequence can give to both the full-length and the 90 bp-deleted isoforms of CGS. Transgenic tobacco plants were generated using these three constructs.

Analysis of tobacco plants transgenic for N-terminal domain-deleted and 90-bp domain-deleted CGS: Transgenic T0 tobacco plants were selected, on sterile media containing 100 mg/l kanamycin sulfate. Thirty kanamycin-resistant plants from each transgenic line were analyzed by PCR

for the presence of the CGS transgenes. All plants were found to contain their respective transgenes. Expression of transgenic CGS protein in vegetative tissues of T0 plants was analyzed via Western immunoblotting with anti-3HA antibodies or CGS anti-serum. Figure 6 show the results of several 5 representative plants expressing the various CGS transgenes. Protein species corresponding in size to the expected forms of CGS were expressed at varying levels, indicating that CGS is processed as it is transported into plastids. In plants expressing high levels of full-length CGS protein, an additional species of a size corresponding to that of the 90 bp-deleted protein was detected, 10 suggesting that both isoforms are transcribed from a single gene.

Phenotype of CGS-transgenic tobacco plants: The phenotype of seven week-old, kanamycin-resistant, greenhouse-grown plants was assessed. Plants transgenic for full-length CGS generally displayed a phenotype similar to wild-type, however plants transgenic for N-terminal-deleted CGS exhibited 15 stunted growth and delayed development, and had narrower, greener and curlier leaves. These characteristics were most noticeable at later stages of plant development. Furthermore, the plants lost their apical dominance, buds formed on primary stems, and displayed bushy structures. Buds were produced in the upper stems but most were cut off following formation of an 20 abscission zone and some, mostly sterile, flowers formed. The life-span of these plants was found to be 2.5 years, a dramatic extension from their normal lifespan of 3-6 months. These plants were perhaps enabled to survive due to their sustained growth of secondary stems.

Most of the transgenic plants expressing the 90 bp-deleted CGS gene 25 exhibited a similar phenotype to those expressing full-length CGS and the wild type plants. However, some of the plants expressing high levels of the 90 bp-deleted transgenic protein were slightly abnormal, exhibiting greener and narrower leaves than the wild-type. This phenotype was diminished in latter developmental stages.

Emission of dimethyl sulfide from transgenic plants expressing N-terminal domain-deleted CGS: One of the most notable characteristics of transgenic plants expressing the N-terminal-deleted CGS is a typical, very heavy odor. In order to determine the identity of the chemical causing this odor, GC-MS was analysis was performed on 1 g of young leaves as described in the methods section. As shown in Figures 8a-b , transgenic plants were found to principally emit the VOC dimethylsulfide and carbon disulfide, both catabolic products of Met. In one transgenic plant (N60), emission of dimethylsulfide was found to be 60-fold higher than that in wild-type plants. Although broad variation in dimethylsulfide production was observed overall within the transgenic plants, those expressing N-terminal-deleted CGS were found to produce 21 times the levels of dimethylsulfide as compared to wild-type plants or transgenic plants expressing the full-length CGS (Figures 8a-b). In most cases a positive correlation was observed between expression levels of CGS, as indicated by Western immunoblot analysis, and dimethylsulfide production levels. In addition, changes in the levels of other compounds such as pentanal, hexanal and hexanol were also observed (Table 2).

The heavy odor emitted from plants expressing the CGS lacking its N-terminal region attracted small mosquitoes as shown in Figure 9.

Table 2. Analysis of transgenic plants expressing the Arabidopsis CGS cDNA

Plant ID #	pheno-type	western blot	SMM (% free amino acid)	Met (% free amino acid)	Quantity (GCMS results x 103 units)				
					Dimethyl sulfide	Carbon disulfide	Pentanal	Hexanal	Hexanol
N5	-	+	0	0	60	110	8	95	15
N11	+	+++	6.2	2.9	680	0	0	100	0
N23	+	++	7.2	0.9	230	35	6	12	8
N25	+	+++	10.5	1.7	400	190	6	18	11
N37	+	+++	6.9	0.9	250	0	30	390	200
N44	+	++	6.7	1.0	530	550	0	48	0
N46	-	++	15.9	11.2	980	0	10	8	0
N63	+	+++	8	0.92	450	220	0	280	144

N66	+	+++	10.4	2.7	1250	0	13	50	35
D40	+	+++	13.8	1.8	260	90	10	92	30
D44	-	+++	16.2	1.5	240	0	10	38	0
D48	-	+	5.7	0.7	160	22	0	62	28
D53	-	+++	13.0	7.2	500	38	0	58	36
D55	-	++	12.4	0.5	500	60	8	110	20
D56	-	++	9.7	2.7	48	12	16	100	32
D67	-	+++	7.8	5.0	140	0	8	32	0
D70	+	++	10.5	2.5	132	7	17	27	0
D71	+	++	9.9	1.1	240	80	20	134	35
D76	-	++	8.1	4.1	190	18	8	96	0
F23	-	+++	4.9	0.3	24	5	8	50	0
F30	-	+++	5.4	1.1	130	0	350	130	0
F39	-	+++	6.4	0.7	310	59	0	200	32
F41	-	++	10.8	1.9	7	0	34	75	0
F45	-	+	12.5	0.6	40	11	0	200	0
F47	-	++	10.2	1.0	9	0	13	131	21
F63	-	++	3.0	0.2	60	0	17	110	0
F66	-	++	8.9	0.5	5.5	0	5	27	0
F71	-	+++	4.6	3.4	17	0	3.5	23	8.5
NN10	-	-	0.8	0	15	5	5	0	22
NN11	-	-	1.6	0	26	16	8	58	68
NN12	-	-	0.5	0.2	5	55	6	80	0

Transgenic lines denoted by N# express N-terminal domain-deleted CGS and those denoted by D# express 90 bp domain-deleted CGS. Transgenic lines expressing full-length CGS are denoted by F#. Wild-type plants are denoted by NN#. Levels of Met and SMM are calculated as % mole from total amino acids. Results from GC-MS analysis are also indicated.

5

Amino acid analysis of transgenic plants: Free amino acids were extracted from young leaves and levels of Met and SMM, as % total free amino acids, were determined. Levels of Met were found to be higher in all three transgenic lines expressing CGS at moderate to high levels than in the wild-type plants (Figures 7a,b). The highest levels observed (11.2%, plant N46) represent a 56-fold increase relative to wild-type. Average Met levels were found, in order of decreasing percentage, to be 2.7% in plants expressing 90 bp-deleted CGS, 1.7% in plants expressing N-terminal-deleted CGS, 1.1% in plants expressing full-length CGS, and 0.1% in wild-type plants. The same general trend was detected in the average SMM levels (Figure 8b); Overall, levels of SMM in transgenic plants were increased 7- to 16-fold over wild-type plants.

15

Levels of protein-incorporated Met were also analyzed in leaves of transgenic plants (Figure 7c). Levels of protein-incorporated Met increased

2-fold in plants expressing N-terminal domain-deleted CGS relative to wild-type. Thus, overexpression of CGS, obtained via deletion of negative regulatory sequences in exon 1, leads to increased levels of Met and SMM production in the transgenic tobacco plants. Importantly, the levels of the other aspartate family amino acids, threonine, lysine and isoleucine, remained unchanged in these plants.

Ethylene production: Ethylene, one of the major phytohormones in plants, is synthesized from methionine via SAM. Since the transgenic plants expressing the truncated CGS possessed a phenotype that resembles ethylene symptoms, the rate of ethylene emission in three-week-old shoots regenerated from transgenic and wild-type plants was tested. As shown in Figure 10, ethylene production was comparable between wild-type and transgenic plants expressing full-length and deleted version of *Arabidopsis* CGS. However, in the transgenic plants expressing the truncated CGS which lacks the N-terminal region, ethylene production was nearly 40 times higher than that of wild-type plants. This high level of ethylene may explain some of the abnormal phenotypes observed in the transgenic plants, such as enhanced abscission of flower buds, dryness of the apical meristem and leaf primordium, retarded stem elongation, as well as curled leaves.

Biotin production: As shown in Table 3, biotin levels in the transgenic plants expressing the N-terminal domain deleted CGS were found to be 20% higher than that of wild-type plants.

Table 3. Biotin levels in plants expressing N-terminal domain-deleted CGS versus that in wild-type plants (NN)

Strains	Picogram biotin/ μg tissue	Wild-type	Picogram biotin/ μg tissue
N13	9.45	NN1	10.18
N14	9.48	NN2	8.32
N44	9.04	NN3	5.35
N46	16.29	NN4	8.03
N63	10.23	NN5	10.02
Average	10.9	Average	8.5
S.D	1.37	S.D	0.77

DISCUSSION

The results presented by this study bring forth evidence that CGS activity is the major rate-limiting step in methionine biosynthesis. In addition, several new findings concerning the regulation of methionine biosynthesis and methionine accumulation and catabolism have also been uncovered by this study.

As shown herein, the N-terminal of CGS, a region not essential for enzymatic activity is important in its regulation. Such regulation may occur at the level of transcript stability, as suggested by Chiba *et al.* [Chiba *et al.* (1999) Science 286: 1371-1374], who demonstrated that mutations clustered in small part at this N-terminal region can lead to mRNA stability and thus enhance enzyme activity, or alternatively such regulation can occur at the post translational level.

As described hereinabove, a marked increase of methionine levels was observed in the transgenic tobacco plants overexpressing the truncated CGS. However, methionine related metabolite levels also increased in transgenic plants overexpressing the truncated CGS, implying that methionine levels can not be raised beyond a certain threshold in tobacco plants.

In addition, the transgenic plants of the present invention exhibited a two fold increase in protein-bound methionine. Analysis of the characteristic smell of the transgenic plants overexpressing the truncated CGS revealed that methyl and sulfide groups are emitted from the plants. The fact that dimethylsulfide and carbon disulfide are the major compounds emanating from the plants, at a level more than 60 times that of the wild type plants, suggests that the methionine level is not regulated by the sulfur supply or by the cysteine level.

Although plant CGS lacking an N-terminal is similar to bacterial CGS, overexpression of the bacterial gene would not produce similar results since bacterial CGS enzyme utilizes O-succinylhomoserien rather than O-phosphohomoserine as a substrate in the methionine pathway.

Sulfur emission:

As mentioned hereinabove, analysis of the characteristic smell of the transgenic plants overexpressing the truncated CGS revealed that methyl and sulfide groups are emitted from the plants.

5 Several possible functions have been attributed to sulfur emission by plants, including its anti-microbial effect, the discharge of toxic compounds produced in cellular metabolism, or allelopathic effects in plant communities. Dimethylsulfide and methanethiol are precursors for varieties of phytoalexins that are involved in the defense responses. This compound is induced by attacks by herbivores (including insects), and deters them [Stadler (2000) in: 10 Sulfur Nutrition and Sulfur assimilation in Higher Plants, Paul Haupt, Bern, Switzerland pp. 187-202; Attieh et al. (1995) J. Biol. Chem. 270: 9250-9257].

In addition, it has been suggested that dimethylsulfide contributes to the scent of flowers, and is an important element in the flavor of many vegetables, 15 beer and tea [Mandin *et al.* (1999) J. Agric Food Chem 47:2355-2359].

Production of SMM:

Analysis of free amino acids extracted from the transgenic tobacco plants revealed a level of S-methylmethionine (SMM) about ten times higher than that found in wild type plants.

20 SMM has several important functions in plants. It is produced in all flowering plants from methionine, which has a separate mechanism to convert SMM back to methionine. It functions in both storage and transport of labile methyl moieties. It is thought to be the major form of reduced sulfur capable of phloem movement.

25 In barley for example, SMM stores methyl groups which are converted back to methionine in periods of high metabolism, such as in the early stages of germination [Pimenta *et al.* (1998) Plant Physiol. 118:431-438]. In wheat, it has been suggested that SMM which is synthesized in leaves translocates to the grains and is recycled to methionine for use in protein synthesis.

SMM is also a precursor for 3-dimethylsulfoniopropionate (DMSP), an osmoprotectant accumulated by certain plants. Salinization generally enhances DMSP accumulation which is an analog of a betaine having a sulfur atom in place of nitrogen and exhibiting osmoprotectant and cryoprotectant properties similar to that of betaines. When nitrogen supply is limited, higher plants and algae may compensate for reduced capacity to synthesize betaines by producing more DMSP [James *et al.* (1995) *Plant Physiol.* 108:1439-1448].

Production of SAM:

The level of S-adenosyl methionine (SAM) was not measured in this study, since it is a very unstable compound and as such difficult to measure. however, an increase in the level of SAM products, biotin and ethylene, in the transgenic tobacco plants indicates higher SAM production in the transgenic plants.

SAM serves as a cofactor for a variety of reactions in all living cells. It is the major methyl-group donor in numerous highly specific transmethylation reactions of proteins, lipids, polysaccharides and nucleic acids. These reactions may also play a crucial role in redirecting intermediates toward specific biosynthetic pathways [Belbahri *et al.* (2000) *Biotechnol. Bioeng.* 69:11-20]. In tobacco cells, for example, putricine-N-methyltransferase catalyzes the transfer of a methyl group from SAM to an amino-group of putricine, which is the first step in the biosynthesis of tobacco alkaloids. The lack of SAM may affect this metabolic pathway by altering the product quantitatively and qualitatively. Attempts have been made to increase alkaloid contents in tobacco (nicotine and nornicotine), through transgenic cells overexpressing SAM-synthase1.

Thus, the present invention also provides an alternative approach to increasing SAM and metabolites such as nicotine and nornicotine in plants.

Although the invention has been described in conjunction with specific embodiments thereof, it is evident that many alternatives, modifications and

variations will be apparent to those skilled in the art. Accordingly, it is intended to embrace all such alternatives, modifications and variations that fall within the spirit and broad scope of the appended claims. All publications, patents, patent applications and sequences identified by their accession numbers mentioned in this specification are herein incorporated in their entirety by reference into the specification, to the same extent as if each individual publication, patent, patent application or sequence identified by their accession number was specifically and individually indicated to be incorporated herein by reference. In addition, citation or identification of any reference in this application shall not be construed as an admission that such reference is available as prior art to the present invention.

WHAT IS CLAIMED IS:

1. A method of increasing methionine and/or methionine related metabolites in a plant, the method comprising expressing within the plant a cystathionine γ -synthase encoded by a polynucleotide mutated in, or lacking, a region encoding an N-terminal portion of said cystathionine γ -synthase, said region being functional in downregulating an activity of said cystathionine γ -synthase in the plant.

2. The method of claim 1, wherein said region encoding an N-terminal portion spans nucleotides 1-300 of said polynucleotide encoding said cystathionine γ -synthase.

3. The method of claim 1, wherein said polynucleotide is as set forth in SEQ ID NOs:3 or 4.

4. A nucleic acid construct comprising a polynucleotide encoding a cystathionine γ -synthase, said polynucleotide being mutated in, or lacking, a region encoding an N-terminal portion of said cystathionine γ -synthase, said region being functional in downregulating an activity of said cystathionine γ -synthase in the plant.

5. The nucleic acid construct of claim 4, wherein said polynucleotide is as set forth in SEQ ID NO: 3 or 4.

6. The nucleic acid construct of claim 4, further comprising an additional polynucleotide encoding a transit peptide, said additional polynucleotide being covalently linked to said polynucleotide encoding said cystathionine γ -synthase.

7. The nucleic acid construct of claim 4, further comprising a promoter sequence being for directing the expression of a polypeptide from said polynucleotide sequence in a plant.

8. The nucleic acid construct of claim 7, wherein said promoter is selected from the group consisting of an inducible promoter, a constitutive promoter, a tissue specific promoter and a development regulatable promoter.

9. The nucleic acid construct of claim 4, further comprising an additional polynucleotide sequence encoding a storage protein.

10. A plant transformed with the nucleic acid construct of claim 3.

11. A method of increasing the resistance of a plant to pathogen attack comprising expressing within the plant a cystathionine γ -synthase encoded by a polynucleotide mutated in, or lacking, a region encoding an N-terminal portion of said cystathionine γ -synthase, said region being functional in downregulating an activity of said cystathionine γ -synthase in the plant.

12. The method of claim 11, wherein said polynucleotide is as set forth in SEQ ID NOs:3 or 4.

13. A method of increasing the commercial and/or nutritional value of a plant comprising expressing within at least a portion of the plant a cystathionine γ -synthase encoded by a polynucleotide mutated in, or lacking, a region encoding an N-terminal portion of said cystathionine γ -synthase, said region being functional in downregulating an activity of said cystathionine γ -synthase in the plant, thereby increasing the level of methionine and/or metabolites of said methionine, hence increasing the commercial and/or

nutritional value of the plant.

14. The method of claim 13, wherein said polynucleotide is as set forth in SEQ ID NOs:3 or 4.

15. The method of claim 13, wherein at least one of said metabolites contributes to the scent of a flower of a flowering plant.

16. The method of claim 13, wherein the plant is a consumable crop plant, whereas increasing the level of methionine increases the level of methionine-rich storage proteins stored by said crop and thus the nutritional value of said crop.

17. The method of claim 13, further comprising expressing within the plant aspartate kinase (AK).

18. The method of claim 17, wherein the aspartate kinase is a feed back insensitive aspartate kinase.

19. A method of generating a crop plant having enhanced nutritional value, the method comprising:

- (a) obtaining a first plant expressing a cystathionine γ -synthase encoded by a polynucleotide mutated in, or lacking, a region encoding an N-terminal portion of said cystathionine γ -synthase, said region being functional in downregulating an activity of said cystathionine γ -synthase in the plant;
- (b) crossing said first plant with a second plant expressing methionine-rich storage proteins; and
- (c) isolating progeny plants which express said cystathionine γ -synthase and said methionine-rich storage proteins to thereby

obtain the crop plant having enhanced nutritional value.

20. The method of claim 19, wherein said polynucleotide is as set forth in SEQ ID NOs:3 or 4.

21. A method of generating a crop plant having enhanced nutritional value, the method comprising transforming the crop plant with:

- (a) a first polynucleotide encoding a cystathionine γ -synthase, said first polynucleotide being mutated in, or lacking, a region encoding an N-terminal portion of said cystathionine γ -synthase, said region being functional in downregulating an activity of said cystathionine γ -synthase in the plant; and
- (b) a second polynucleotide encoding, in an expressible form, at least one methionine-rich storage protein, to thereby obtain the crop plant having enhanced nutritional value.

22. The method of claim 21, wherein said first polynucleotide is as set forth in SEQ ID NOs:3 or 4.

23. A method of obtaining at least one methionine related metabolite, the method comprising:

- (a) obtaining a plant expressing a cystathionine γ -synthase encoded by a polynucleotide mutated in, or lacking, a region encoding an N-terminal portion of said cystathionine γ -synthase, said region being functional in downregulating an activity of said cystathionine γ -synthase in the plant; and
- (b) extracting at least one methionine related metabolite from the plant.

24. A method of controlling ethylene levels of a plant, the method comprising

- (a) transforming the plant with a nucleic acid construct including a first polynucleotide region encoding a regulatable promoter being for directing the expression of a second polynucleotide region encoding a cystathionine γ -synthase mutated in, or lacking, an N-terminal portion being functional in downregulating an activity of said cystathionine γ -synthase in the plant; and
- (b) subjecting the plant to conditions which regulate expression of said cystathionine γ -synthase, thereby controlling ethylene levels of the plant

25. The method of claim 24, wherein step (a) is effected at a developmental stage of the plant suitable for altering fruit ripening.

26. The method of claim 24, wherein said second polynucleotide is as set forth in SEQ ID NO: 4.

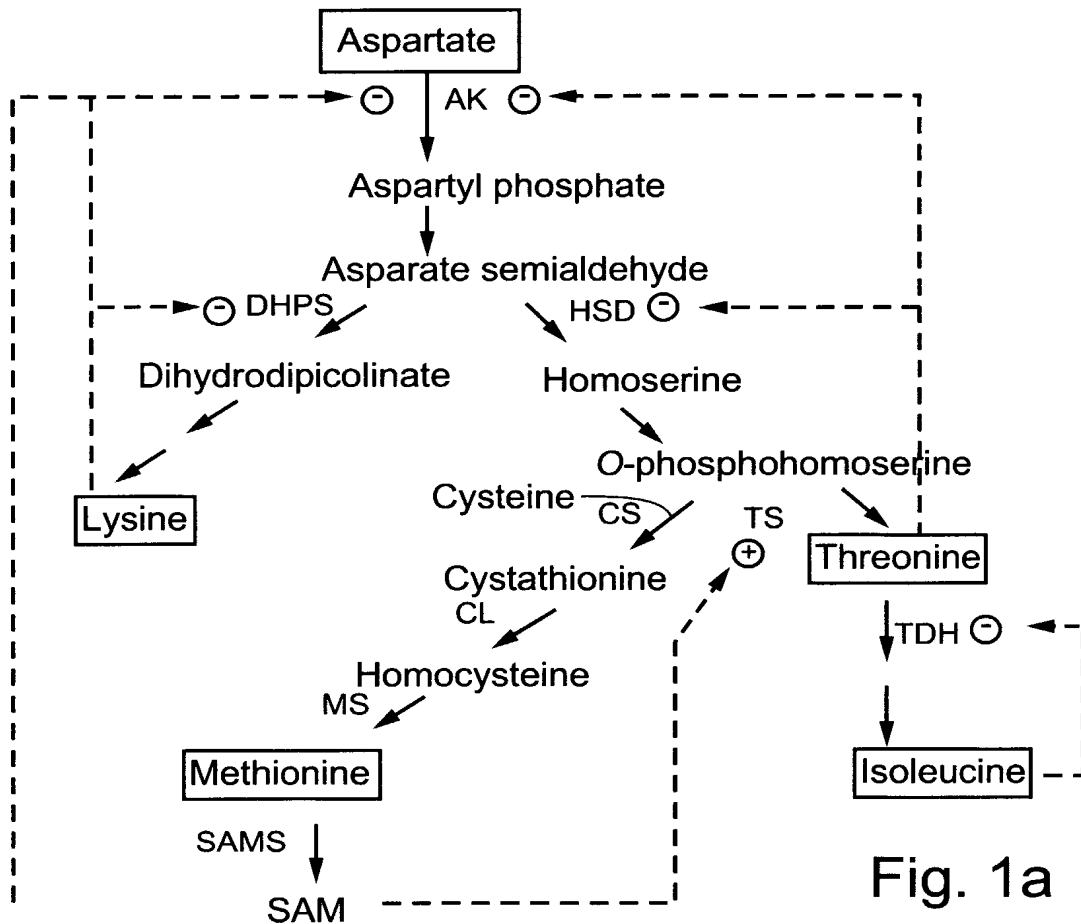


Fig. 1a

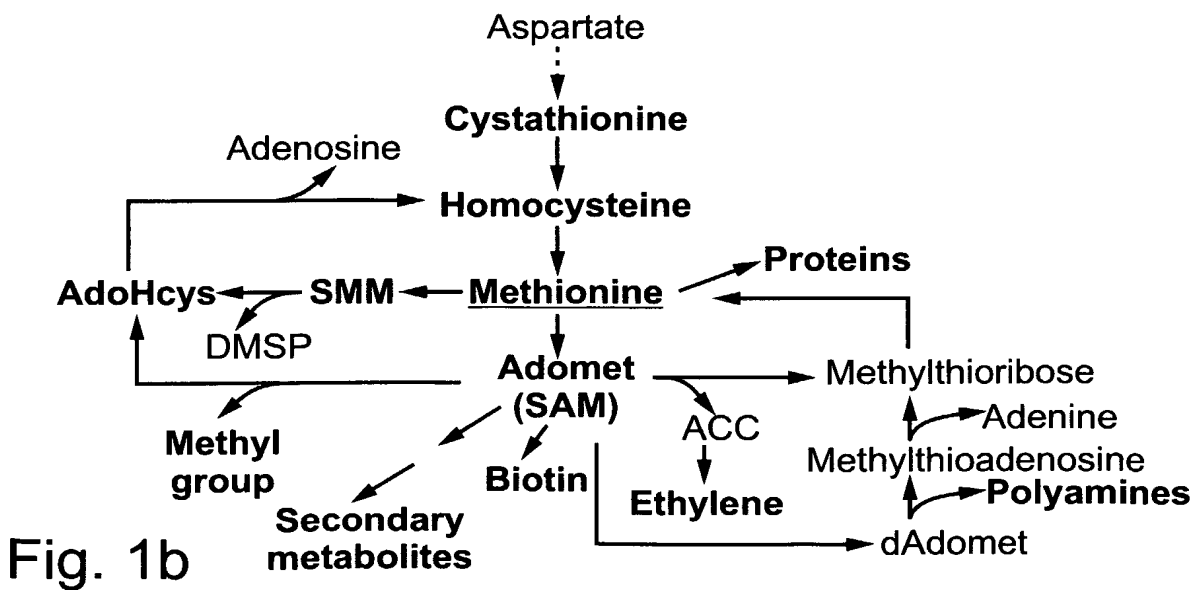


Fig. 1b

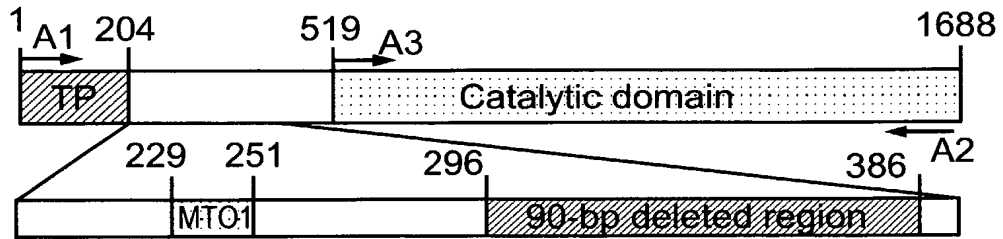


Fig. 2

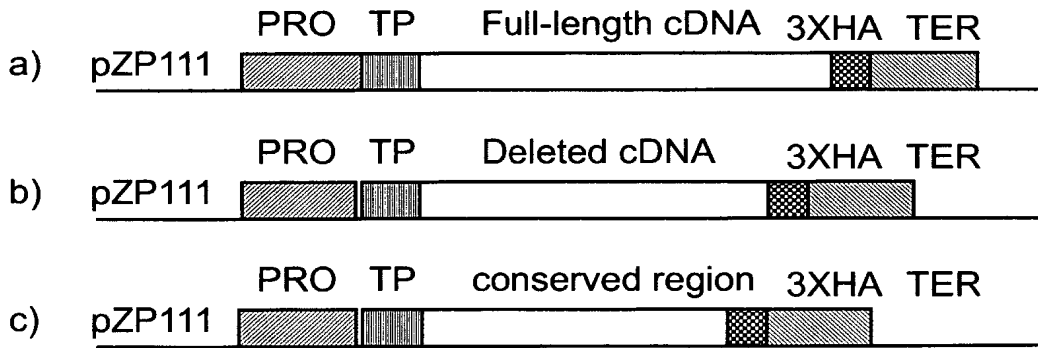


Fig. 3

Aarbidopsis	1	MAVSSFCQPTIFSSSSISGFQCFSDPDLVCSVCCSEFRFRVHASAGIS	SFTG	GL	SR		V		I	R
Soybean	1	-----MAVSSSHMRFTFECRSDPDFSFFFESEFDLRRNFRGSAD	GAAFH	-I	SL				T	R
Zea	1	-----MATVSLTPQAVF	TESCG	LA	AT		V		T	R
Helicobacter	1	-----								
Escherichia	1	-----								

Aarbidopsis	31	S	G							
Soybean	72	S	G							
Zea	45	S	G							
Helicobacter	1	-----								
Escherichia	1	-----								

Aarbidopsis	161	VQLTDSRHSE	SSE	SLT	HA	ERL	GPC	IV	DA	IT
Soybean	134	VQLRSSYSSE	KSD	SKT	IHA	FER	LGR	GET	DT	IT
Zea	108	LSAVVLAIFNL	GS	SLA	HA	ERL	GPC	IV	DA	IT
Helicobacter	1	-----								
Escherichia	1	-----								

Aarbidopsis	241	ISALEGAESTLVNASGHCAS	TMLL	LAL	VP	AGGH	V	T	T	D
Soybean	214	ISALEGAESTLVINASGMCAS	VVLF	MA	LV	PAGGH	V	T	T	D
Zea	188	ISALEKAESTLVYASGNYAAA	AL	SA	LV	PAGGH	V	T	T	D
Helicobacter	59	ADLEGEVKGFAFASG	FA	SI	HA	YF	SL	LQ	-	SD
Escherichia	61	LADLEGGAGAV	IT	NG	SA	IHL	VT	V	VF	K

Aarbidopsis	321	LFFTESPTNPFLRCVDI	ELV	SK	ICH	K	KG	T	LC	I
Soybean	294	LFFTESPTNPFLRCVDIKL	VSE	L	CH	K	KG	T	LC	I
Zea	268	LFFTESPTNPFLRCVDI	ELV	SK	ICH	K	KG	T	LC	I
Helicobacter	137	ALVLEPPNPPL	IT	DE	LA	OC	SV	AN	DE	GL
Escherichia	140	LVLVSSPNPL	LR	V	D	I	AK	I	CH	L

Aarbidopsis	400	SEIRNLHHVIGGTLNPN	AA	YL	LR	GM	KT	L	HL	R
Soybean	373	SEIRTLHHVIGGTLNPN	AA	YL	LR	GM	KT	L	HL	R
Zea	347	SKMRTLHHVIGGTLNPN	AA	YL	LR	GM	KT	L	HL	R
Helicobacter	217	QETAFQNAIGCVLGP	Q	DS	L	LC	R	G	K	T
Escherichia	220	TEFAWANNNGV	GG	A	F	D	S	Y	L	L

Aarbidopsis	480	VSFEH	DGD	IE	TT	TK	F	DSL	K	I
Soybean	453	VSFEH	DGD	L	H	T	T	TK	F	DSL
Zea	427	VSFEH	AGD	F	DA	I	R	K	F	DSL
Helicobacter	297	HSFTL	KN	DS	E	AW	AF	V	SL	K
Escherichia	300	VSFEH	DGD	E	CT	LR	FT	L	G	LS

Aarbidopsis	560	LEAI	--							
Soybean	533	LEAI	---							
Zea	506	LEAI	---							
Helicobacter	376	FAKI	G--							
Escherichia	380	FR	ANKG							

Fig. 4

4/10

ATGGCCGTCTCATCATTCCAGTGCCCTACCATCTTCTCCTCCTCCTCAATCTCCGGCTTT
CAATGCCGTTCTGATCCAGATCTCGTCCGTTCTCCCGTCCGGTGGATCATCTCGCCGTCGT
GTCCATGCCTCCGCCGGGATTTCTTCTCATTACCCGGGACGCTGGATTATCCTCCAGG
ATCTTAAGATTTCTCCTAATTTTCGTCCGTCAGCTGAGCATTAAAGCCCCTAGAAACTGT
AGCAACATCGGTGTTGCACAGATCGTGGCGGCTAAGTGGTCCAACAACCCATCCTCCGCG
TTACCTTCGGCGGCGGGCGGCTGCTGCTACCTCGTCTGCATCTGCGGTTTCTTCCGCCGCA
TCTGCAGCCGCAGCCTCGTCCGCCGCCGCCGCCCTGTGGCTGCCGCGCCTCCCGTCGTG
CTGAAAAGCGTCGATGAGGAGGTTGTGGTGGCCGAGGAGGGGATCAGGGAGAAGATAGGT
AGTGTACAGCTGACGGATCCAACATTCTTTCTTGAGCTCCGATGGGAGCCTCACTGTT
CATGCCGTTGAAAGATTAGGCCGTGGTATAGTGACGGATGCTATCACTACTCCTGTAGTC
AACACATCTGCCTACTTCTTCAAGAAAAGTCTGAGCTTATTGACTTCAAGGAGAAAAGG
AGTGTGAGTTTCGAGTATGGTCGTTATGGTAACCCTACGACTGTGGTACTTGAAGATAAG
ATAAGTGCCTTGAAGGGGCTGAATCAACTTTGGTTATGGCATCTGGGATGTGTGCAAGC
ACTGTTATGCTTTTGGCATTGGTTCCTGCTGGTGGACACATTGTCACTACTACTGATTGC
TACAGGAAGACTAGGATCTTCATGGAGAATTTTCTTCCCAAGTTGGGGATCACTGTCACT
GTGATTGATCCTGCTGATATCGCAGGGCTTGAAGCTGCAGTGAATGAGTTCAAGGTATCT
CTGTTCTTCACTGAGTCCCCGACAAACCCATTCTTAGATGTGTGACACTTGGAGTAGTT
TCAAAAATATGCCACAAGAGGGGAACCTCTGGTTTGCATTGATGGCACCTTTGCAACACCT
CTGAATCAGAAAGCCCTTGCTCTTGGTGTGATCTTGTGTCGACTCTGCTACAAAGTAC
ATTGGAGGACACAATGATGTTCTTGGTGGATGCATCTGTGGTTCCTGAAGTTGGTTTCA
GAAATTCGCAATCTGCATCATGTGTTGGGAGGAACACTTAACCCAAACGCTGCGTACCTA
ATCATCCGAGGCATGAAGACATTGCATCTTCGTGTACAGCAACAGAATTTCGACCGCTTTT
AGAATGGCCGAAATTTTAGAGGCACATCCTAAGGTGAGTCATGTGTACTATCCAGGCCTT
CCAAGTCATCCCGAACATGAACTCGCCAAGCGACAAATGACTGGTTTTGGAGGTGTGGTC
AGTTTCGAGATTGATGGAGACATTGAAACGACAATCAAGTTTGTGGATTCTCTAAAGATT
CCTTACATTGCACCATCCTTCGGTGGCTGCGAAAGCATTGTTGACCAACCTGCTATCATG
TCCTACTGGGATCTGCCGCAAGAGGAGAGACTAAAGTATGGAATCAAAGATAACTTGGTT
CGTTTCAGCTTTGGAGTTGAAGACTTTGAAGATGTCAAAGCTGACATTCTTCAAGCTCTC
GAAGCCATCTGA

Fig. 5a (SEQ ID No: 1)

5/10

GTCCGTCAGCTGAGCATTAAAGCCCGTAGAACTGTAGCAACATCGGTGTTGCACAGATC
GTGGCGGCTAAGTGGTCCAACAACCCATCCTCCGCGTTACCTTCGGCGGGCGGGCTGCT
GCTACCTCGTCTGCATCTGCGGTTTCTTCCGCGCATCTGCAGCCGCAGCCTCGTCCGCC
GCCGCCGCCCTGTGGCTGCCGCGCCTCCCGTCGTGCTGAAAAGCGTCGATGAGGAGGTT
GTGGTGGCCGAGGAGGGGATCAGGGAGAAGATAGGTAGTGTACAGCTGACGGATTCCAAA
CATTCTTTCTTGAGCTCCGATGGGAGCCTCACTGTTTCATGCCGGTGAAAGATTAGGCCGT
GGTATAGTGACGGATGCTATCACTACTCCTGTAGTCAACACATCTGCCTACTTCTTCAAG
AAAAGTGTGAGCTTATTGACTTCAAGGAGAAAAGGAGTGTGAGTTTCGAGTATGGTCGT
TATGGTAACCCTACGACTGTGGTACTTGAAGATAAGATAAGTGCACCTGAAGGGGCTGAA
TCAACTTTGGTTATGGCATCTGGGATGTGTGCAAGCACTGTTATGCTTTTGGCATTGGTT
CCTGCTGGTGGACACATTGTCCTACTACTGATTGCTACAGGAAGACTAGGATCTTCATG
GAGAATTTTCTTCCCAAGTTGGGGATCACTGTCCTGTGATTGATCCTGCTGATATCGCA
GGGCTTGAAGCTGCAGTGAATGAGTTCAGGTATCTCTGTTCTTCACTGAGTCCCCGACA
AACCATTCTTAGATGTGTGACATTGAGCTAGTTTCAAAAATATGCCACAAGAGGGGA
ACTCTGGTTTGCATTGATGGCACCTTTGCAACACCTCTGAATCAGAAAGCCCTTGCTCTT
GGTGTGATCTTGTGCTGCACTCTGCTACAAAGTACATTTGGAGGACACAATGATGTTCTT
GCTGGATGCATCTGTGGTTCACTGAAGTTGGTTTCAGAAATTCGCAATCTGCATCATGTG
TTGGGAGGAACACTTAACCCAAACGCTGCGTACCTAATCATCCGAGGCATGAAGACATTG
CATCTTCGTGTACAGCAACAGAATTCGACCGCTTTTAGAATGGCCGAAATTTTAGAGGCA
CATCCTAAGGTGAGTCATGTGTACTATCCAGGCCTTCCAAGTCATCCCGAACATGAACTC
GCCAAGCGACAAATGACTGGTTTTGGAGGTGTGGTCAGTTTCGAGATTGATGGAGACATT
GAAACGACAATCAAGTTTGTGGATTCTCTAAAGATTCCTTACATTGCACCATCCTTCGGT
GGCTGCGAAAGCATTGTTGACCAACCTGCTATCATGTCCTACTGGGATCTGCCGCAAGAG
GAGAGACTAAAGTATGGAATCAAAGATAACTTGGTTTCGTTTCAGCTTTGGAGTTGAAGAC
TTTGAAGATGTCAAAGCTGACATTCTTCAAGCTCTCGAAGCCATCTGA

Fig. 5b (SEQ ID No: 2)

6/10

GTCCGTCAGCTGAGCATTAAAGCCCGTAGAACTGTAGCAACATCGGTGTTGCACAGATC
GTGGCGGCTAAGTGGTCCAACAACCCATCCTCCGCCGCCCTGTGGCTGCCGCGCCTCCC
GTCGTGCTGAAAAGCGTCGATGAGGAGGTTGTGGTGGCCGAGGAGGGGATCAGGGAGAAG
ATAGGTAGTGTACAGCTGACGGATTCCAACATTCCTTCTTGAGCTCCGATGGGAGCCTC
ACTGTTTCATGCCGGTGAAAGATTAGGCCGTGGTATAGTGACGGATGCTATCACTACTCCT
GTAGTCAACACATCTGCCTACTTCTTCAAGAAAACCTGCTGAGCTTATTGACTTCAAGGAG
AAAAGGAGTGTGAGTTTCGAGTATGGTCGTTATGGTAACCCTACGACTGTGGTACTTGAA
GATAAGATAAGTGCACCTTGAAGGGGCTGAATCAACTTTGGTTATGGCATCTGGGATGTGT
GCAAGCACTGTTATGCTTTTGGCATTGGTTCCCTGCTGGTGGACACATTGTCACTACTACT
GATTGCTACAGGAAGACTAGGATCTTCATGGAGAATTTTCTTCCCAAGTTGGGGATCACT
GTCACTGTGATTGATCCTGCTGATATCGCAGGGCTTGAAGCTGCAGTGAATGAGTTCAAG
GTATCTCTGTTCTTCACTGAGTCCCCGACAAACCCATTCCCTTAGATGTGTCGACATTGAG
CTAGTTTCAAAAATATGCCACAAGAGGGGAACTCTGGTTTGCATTGATGGCACCTTTGCA
ACACCTCTGAATCAGAAAGCCCTTGCTCTTGGTGGTGTGATCTTGTCGTGCACTCTGCTACA
AAGTACATTGGAGGACACAATGATGTTCTTGCTGGATGCATCTGTGGTTCCTGAAGTTG
GTTTCAGAAATTCGCAATCTGCATCATGTGTTGGGAGGAACACTTAACCCAAACGCTGCG
TACCTAATCATCCGAGGCATGAAGACATGCATCTTCGTGTACAGCAACAGAATTCGACC
GCTTTTAGAATGGCCGAAATTTTAGAGGCACATCCTAAGGTGAGTCATGTGTACTATCCA
GGCCTTCCAAGTCATCCCGAACATGAACTCGCCAAGCGACAAATGACTGGTTTTGGAGGT
GTGGTCAGTTTCGAGATTGATGGAGACATTGAAACGACAATCAAGTTTGTGGATTCTCTA
AAGATTCCTTACATTGCACCATCCTTCGGTGGCTGCGAAAGCATTGTTGACCAACCTGCT
ATCATGTCCTACTGGGATCTGCCGCAAGAGGAGAGACTAAAGTATGGAATCAAAGATAAC
TTGGTTCGTTTCAGCTTTGGAGTTGAAGACTTTGAAGATGTCAAAGCTGACATTCTTCAA
GCTCTCGAAGCCATCTGA

Fig. 5c (SEQ ID No: 3)

AGCTCCGATGGGAGCCTCACTGTTTCATGCCGGTGAAAGATTAGGCCGTGGTATAGTGACG
 GATGCTATCACTACTCCTGTAGTCAACACATCTGCCTACTTCTTCAAGAAAACCTGCTGAG
 CTTATTGACTTCAAGGAGAAAAGGAGTGTGAGTTTCGAGTATGGTCGTTATGGTAACCCT
 ACGACTGTGGTACTTGAAGATAAGATAAGTGCACCTTGAAGGGGCTGAATCAACTTTGGTT
 ATGGCATCTGGGATGTGTGCAAGCACTGTTATGCTTTTGGCATTGGTTCCTGCTGGTGGA
 CACATTGTCACTACTACTGATTGCTACAGGAAGACTAGGATCTTCATGGAGAATTTTCTT
 CCCAAGTTGGGGATCACTGTCACTGTGATTGATCCTGCTGATATCGCAGGGCTTGAAGCT
 GCAGTGAATGAGTTCAAGGTATCTCTGTTCTTCACTGAGTCCCCGACAAACCCATTCCCTT
 AGATGTGTCGACATTGAGCTAGTTTCAAAAATATGCCACAAGAGGGGAACCTCTGGTTTGC
 ATTGATGGCACCTTTGCAACACCTCTGAATCAGAAAGCCCTTGCTCTTGGTGCTGATCTT
 GTCGTGCACTCTGCTACAAAGTACATTGGAGGACACAATGATGTTCTTGGCTGGATGCATC
 TGTGGTTCACTGAAGTTGGTTTCAGAAATTCGCAATCTGCATCATGTGTTGGGAGGAACA
 CTTAACCCAAACGCTGCGTACCTAATCATCCGAGGCATGAAGACATTGCATCTTCGTGTA
 CAGCAACAGAATTCGACCGCTTTTAGAATGGCCGAAATTTTAGAGGCACATCCTAAGGTG
 AGTCATGTGTACTATCCAGGCCTTCCAAGTCATCCCGAACATGAACTCGCCAAGCGACAA
 ATGACTGGTTTTGGAGGTGTGGTCAGTTTCGAGATTGATGGAGACATTGAAACGACAATC
 AAGTTTGTGGATTCTCTAAAGATTCCCTTACATTGCACCATCCTTCGGTGGCTGCGAAAGC
 ATTGTTGACCAACCTGCTATCATGTCTACTGGGATCTGCCGCAAGAGGAGAGACTAAAG
 TATGGAATCAAAGATAACTTGGTTCGTTTCAGCTTTGGAGTTGAAGACTTTGAAGATGTC
 AAAGCTGACATTCTTCAAGCTCTCGAAGCCATCTGA

Fig. 5d (SEQ ID No: 4)

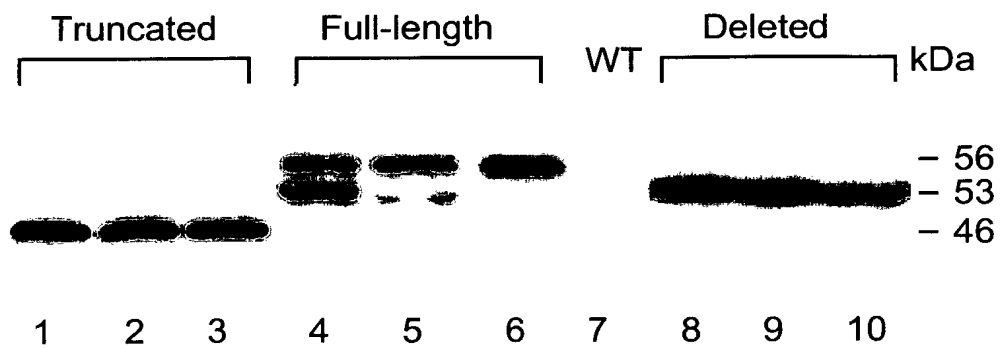


Fig. 6

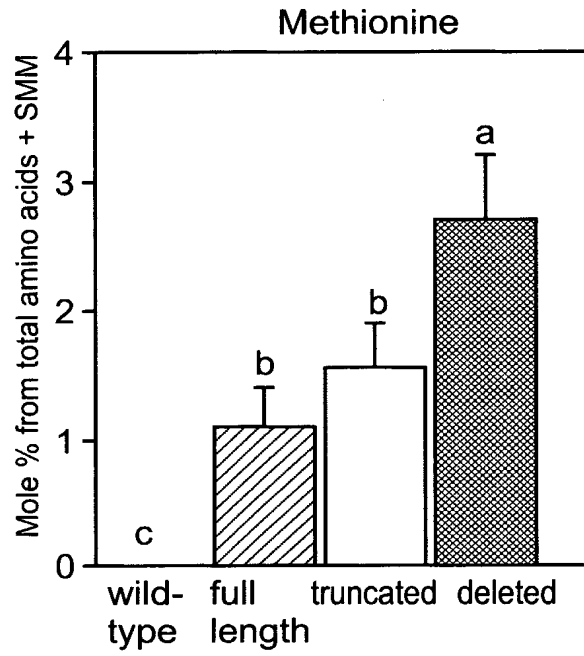


Fig. 7a

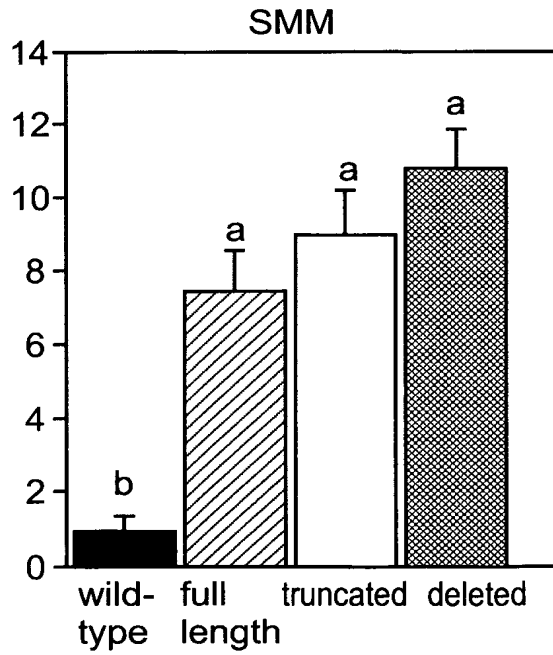
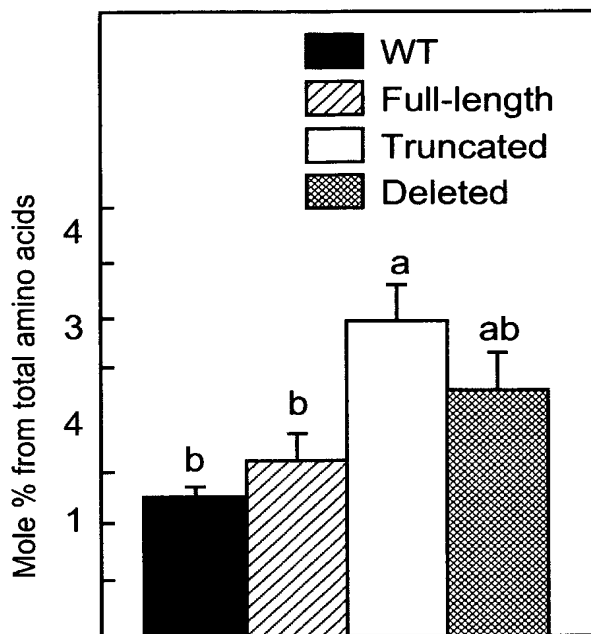


Fig. 7b

9/10



Bound methionine

Fig. 7c

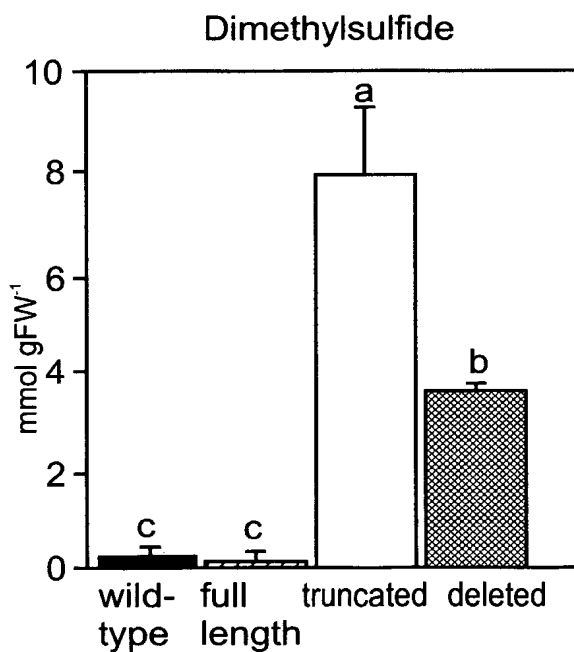


Fig. 8a

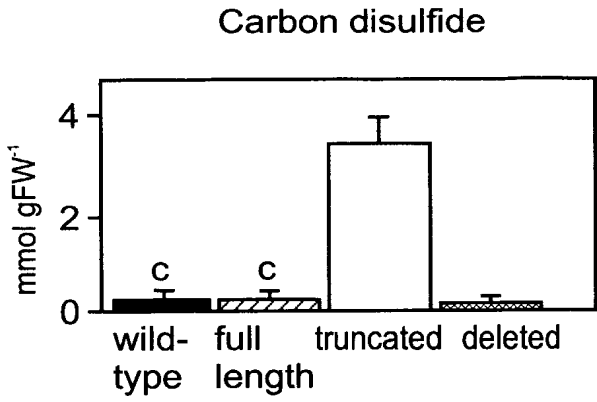


Fig. 8b

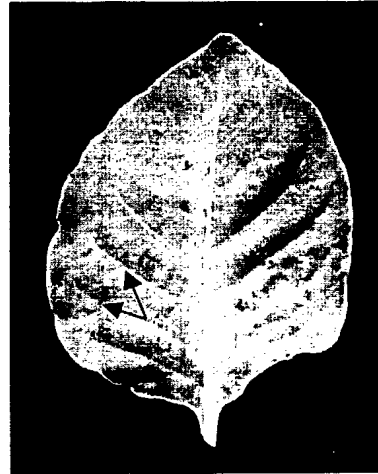


Fig. 9

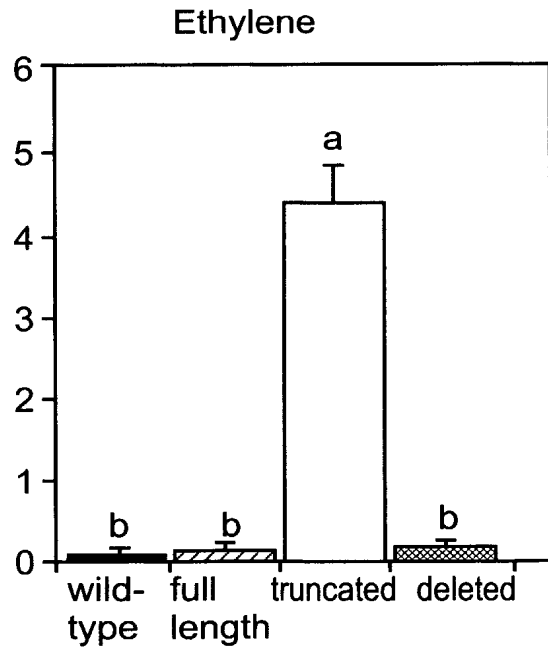


Fig. 10

1
SEQUENCE LISTING

<110> Amir, Rachel

<120> PLANTS CHARACTERIZED BY AN INCREASED CONTENT OF METHIONINE AND RELATED METABOLITES AND METHODS OF GENERATING SAME

<130> 02/23702

<160> 7

<170> PatentIn version 3.0

<210> 1

<211> 1692

<212> DNA

<213> Arabidopsis thaliana

<400> 1

atggcgcgtct catcattcca gtgccttacc atcttctcct cctcctcaat ctccggcttt	60
caatgcogtt ctgatccaga tctcgtcggg tctcccgtcg gtggatcacc tcgcccgtcgt	120
gtccatgcct ccgccgggat ttcttctctca ttcaccgggg acgctggatt atcctccagg	180
atcttaagat ttcttctctaa tttcgtcctg cagctgagca ttaaagcccc tagaaactgt	240
agcaacatcg gtgttgacac gatcgtggcg gctaagtggg ccaacaacct atcctccgcg	300
ttaccttcgg cggcggcggc tgctgctacc tcgtctgcat ctgcccgtttc ttcccgcgca	360
tctgcagccg cagcctcgtc cgccgcgcgc gccctgtgg ctgcccgcgc tcccgtcgtg	420
ctgaaaagcg tcgatgagga ggttggtggg gccgaggagg ggatcagggg gaagataggt	480
agtgtacagc tgacggattc caaacattct ttcttgagct ccgatgggag cctcactgtt	540
catgccggtg aaagattagg ccgtgggtata gtgacggatg ctatcactac tcctgtagtc	600
aacacatctg cctacttctt caagaaaact gctgagctta ttgacttcaa ggagaaaagg	660
agtgtgagtt tcgagtatgg tcgttatggg aaccctacga ctgtggtact tgaagataag	720

2

ataagtgcac ttgaaggggc tgaatcaact ttggttatgg catctgggat gtgtgcaagc	780
actgttatgc ttttggcatt ggttctctgct ggtggacaca ttgtcactac tactgattgc	840
tacaggaaga ctaggatcct catggagaat tttcttccca agttggggat cactgtcact	900
gtgattgatc ctgctgatat cgcagggcct gaagctgcag tgaatgagtt caaggtatct	960
ctgtttcttca ctgagtcccc gacaaacca ttcttagat gtgtcgacat tgagctagtt	1020
tcaaaaatat gccacaagag ggaactctg gtttgcattg atggcacctt tgcaaacct	1080
ctgaatcaga aagcccttgc tcttgggtgct gatcttgtcg tgcactctgc taaaagtac	1140
attggaggac acaatgatgt tcttgcctgga tgcactctgt gttcactgaa gttggtttca	1200
gaaattcgca atctgcatca tgtgttggga ggaacactta acccaaacgc tgcgtaccta	1260
atcatccgag gcatgaagac attgcatcct cgtgtacagc aacagaattc gaccgctttt	1320
agaatggccg aaattttaga ggcacatcct aaggtgagtc atgtgtacta tccaggcctt	1380
ccaagtcac ccgaacatga actcgccaag cgacaaatga ctggttttgg aggtgtggtc	1440
agtttcgaga ttgatggaga cattgaaacg acaatcaagt ttgtggattc tctaaagatt	1500
ccttacattg caccatcctt cgggtggctgc gaaagcattg ttgaccaacc tgctatcatg	1560
tctactggg atctgccgca agaggagaga ctaaagtatg gaatcaaaga taacttggtt	1620
cgtttcagct ttggagttga agactttgaa gatgtcaaag ctgacattct tcaagctctc	1680
gaagccatct ga	1692

<210> 2

<211> 1488

<212> DNA

<213> Arabidopsis thaliana

<400> 2

gtccgtcagc tgagcattaa agcccgtaga aactgtagca acatcgggtg tgacagatc	60
--	----

gtggcggcta agtgggtccaa caacccatcc tccgcgttac cttcggcggc ggcggctgct 120
gctacctcgt ctgcatctgc ggtttcttcc gccgcactctg cagccgcagc ctcgtccgcc 180
gccgccgccc ctgtggetgc cgcgcctccc gtcgtgctga aaagcgtcga tgaggagggt 240
gtggtggccg aggaggggat cagggagaag ataggtagtg tacagctgac ggattccaaa 300
cattctttct tgagctccga tgggagcctc actgttcatg ccggtgaaag attaggccgt 360
ggtatagtga cggatgctat cactactcct gtagtcaaca catctgccta cttcttcaag 420
aaaactgctg agcttattga cttcaaggag aaaaggagtg tgagtttcca gtatggctgt 480
tatggtaacc ctacgactgt ggtacttgaa gataagataa gtgcacttga aggggctgaa 540
tcaactttgg ttatggcatc tgggatgtgt gcaagcactg ttatgctttt ggcatgggtt 600
cctgctggtg gacacattgt cactactact gattgctaca ggaagactag gatcttcatg 660
gagaattttc ttccaagtt ggggatcact gtcactgtga ttgatcctgc tgatatcgca 720
gggcttgaag ctgcagtga tgagttcaag gtatctctgt tcttactga gtccccgaca 780
aacccattcc ttagatgtgt cgacattgag ctagtttcaa aaatagcca caagagggga 840
actctggttt gcattgatgg cacctttgca acacctctga atcagaaagc ccttgctcct 900
ggtgctgac ttgtcgtgca ctctgctaca aagtacattg gaggacacaa tgatgttctt 960
gctggatgca tctgtggttc actgaagttg gtttcagaaa ttcgcaatct gcatcatgtg 1020
ttgggaggaa cacttaacct aaacgctgcg tacctaataca tccgaggcat gaagacattg 1080
catcttcgtg tacagcaaca gaattcgacc gcttttagaa tggccgaaat tttagaggca 1140
catcctaagg tgagtcattg gtactatcca ggccttccaa gtcacccga acatgaactc 1200
gccaagcgac aaatgactgg ttttgagggt gtggtcagtt tcgagattga tggagacatt 1260
gaaacgacaa tcaagtttgt ggattctcta aagattcctt acattgcacc atccttcggt 1320
ggctgcgaaa gcattgttga ccaacctgct atcatgtcct actgggatct gccgcaagag 1380

gagagactaa agtatggaat caaagataac ttggttcggt tcagctttgg agttgaagac 1440

tttgaagatg tcaaagctga cattcttcaa gctctcgaag ccatctga 1488

<210> 3

<211> 1398

<212> DNA

<213> *Arabidopsis thaliana*

<400> 3

gtccgtcagc tgagcattaa agcccgtaga aactgtagca acatcgggtg tgcacagatc 60

gtggcggcta agtgggtccaa caaccatcc tccgccgcc ctgtggctgc cgcgcctccc 120

gtcgtgctga aaagcgtcga tgaggagggt gtgggtggccg aggaggggat cagggagaag 180

ataggtagtg tacagctgac ggattccaaa cattctttct tgagctccga tgggagcctc 240

actgttcatg ccggtgaaag attaggccgt ggtatagtga cggatgctat cactactcct 300

gtagtcaaca catctgccta cttcttcaag aaaactgctg agcttattga cttcaaggag 360

aaaaggagtg tgagtttcga gtatggtcgt tatggtaacc ctacgactgt ggtacttgaa 420

gataagataa gtgcacttga aggggctgaa tcaactttgg ttatggcatc tgggatgtgt 480

gcaagcactg ttatgctttt ggcatgggtt cctgctgggtg gacacattgt cactactact 540

gattgctaca ggaagactag gatcttcatg gagaattttc ttccaagtt ggggatcact 600

gtcactgtga ttgatcctgc tgatatcgca gggcttgaag ctgcagtgaa tgagttcaag 660

gtatctctgt tcttcaactga gtccccgaca aaccattcc ttagatgtgt cgacattgag 720

ctagtttcaa aaatatgcca caagagggga actctgggtt gcattgatgg cacctttgca 780

acacctctga atcagaaaagc ccttgctctt ggtgctgatc ttgtcgtgca ctctgctaca 840

aagtacattg gaggacacaa tgatgttctt gctggatgca tctgtggttc actgaagttg 900

gtttcagaaa ttcgcaatct gcatcatgtg ttgggaggaa cacttaacc aaacgctgcg 960

tacctaatca tccgaggcat gaagacattg catcttcgtg tacagcaaca gaattcgacc 1020
 gcttttagaa tggccgaaat tttagaggca catcctaagg tgagtcattg gtactatcca 1080
 ggccttccaa gtcattcccga acatgaactc gccaaagcagc aaatgactgg ttttgagggt 1140
 gtggtcagtt tcgagattga tggagacatt gaaacgacaa tcaagtttgt ggattctcta 1200
 aagattcctt acattgcacc atccttcggt ggctgcgaaa gcattggtga ccaacctgct 1260
 atcatgtcct actgggatct gccgcaagag gagagactaa agtatggaat caaagataac 1320
 ttggttcggt tcagctttgg agttgaagac tttgaagatg tcaaagctga cattcttcaa 1380
 gctctcgaag ccatctga 1398

<210> 4

<211> 1176

<212> DNA

<213> *Arabidopsis thaliana*

<400> 4

agctccgatg ggagcctcac tgttcatgcc ggtgaaagat taggccgtgg tatagtgacg 60
 gatgctatca ctactcctgt agtcaacaca tctgcctact tcttcaagaa aactgctgag 120
 cttattgact tcaaggagaa aaggagtgtg agtttcgagt atggtcgtta tggtaacctt 180
 acgactgtgg tacttgaaga taagataagt gcacttgaag gggctgaatc aactttgggt 240
 atggcatctg ggatgtgtgc aagcactggt atgcttttgg cattgggtcc tgctggtgga 300
 cacattgtca ctactactga ttgctacagg aagactagga tcttcatgga gaattttctt 360
 cccaagttgg ggatcactgt cactgtgatt gatcctgctg atatcgcagg gcttgaagct 420
 gcagtgaatg agttcaaggt atctctgttc ttcactgagt ccccgacaaa cccattcctt 480
 agatgtgtcg acattgagct agtttcaaaa atatgccaca agaggggaac tctggtttgc 540
 attgatggca cctttgcaac acctctgaat cagaaagccc ttgctcttgg tgctgatctt 600

gtcgtgcaact ctgctacaaa gtacattgga ggacacaatg atggttcttgc tggatgcatc 660
 tgtgggtcac tgaagttggt ttcagaaatt cgcaatctgc atcatgtgtt gggaggaaca 720
 cttaacccaa acgctgcgta cctaatacatc cgaggcatga agacattgca tcttcgtgta 780
 cagcaacaga attcgaccgc ttttagaatg gccgaaattt tagaggcaca tcctaagggtg 840
 agtcatgtgt actatccagg ccttccaagt catcccgaac atgaactcgc caagcgacaa 900
 atgactgggt ttggagggtg ggtcagtttc gagattgatg gagacattga aacgacaatc 960
 aagtttgtgg attctctaaa gattccttac attgcacat ccttcggtgg ctgcgaaagc 1020
 attggtgacc aacctgctat catgtcctac tgggatctgc cgcaagagga gagactaaag 1080
 tatggaatca aagataactt ggttcgtttc agctttggag ttgaagactt tgaagatgtc 1140
 aaagctgaca ttcttcaagc tctcgaagcc atctga 1176

<210> 5

<211> 32

<212> DNA

<213> Artificial

<220>

<223> synthetic oligonucleotide

<400> 5

agcatgctcg tccgtcagct gagcattaa gc 32

<210> 6

<211> 29

<212> DNA

<213> Artificial

<220>

<223> synthetic oligonucleotide

<400> 6

acccgggat gggcttcgag agcttgaag 7 29

<210> 7

<211> 31

<212> DNA

<213> Artificial

<220>

<223> synthetic oligonucleotide

<400> 7

agcatgctca gctccgatgg gagcctcact g 31